



16 Oval Court Pavilion Way, Edgware

Offers Over **£225,000**



16 Oval Court Pavilion Way

Edgware, Edgware

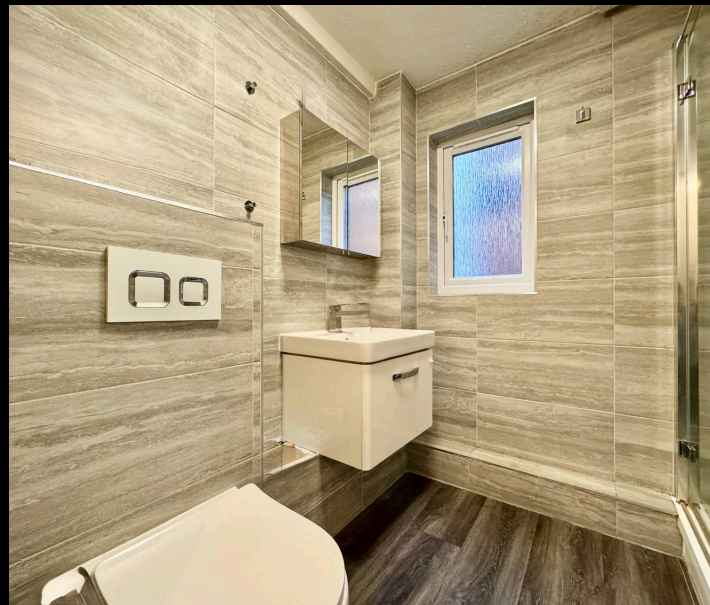
Council Tax band: C

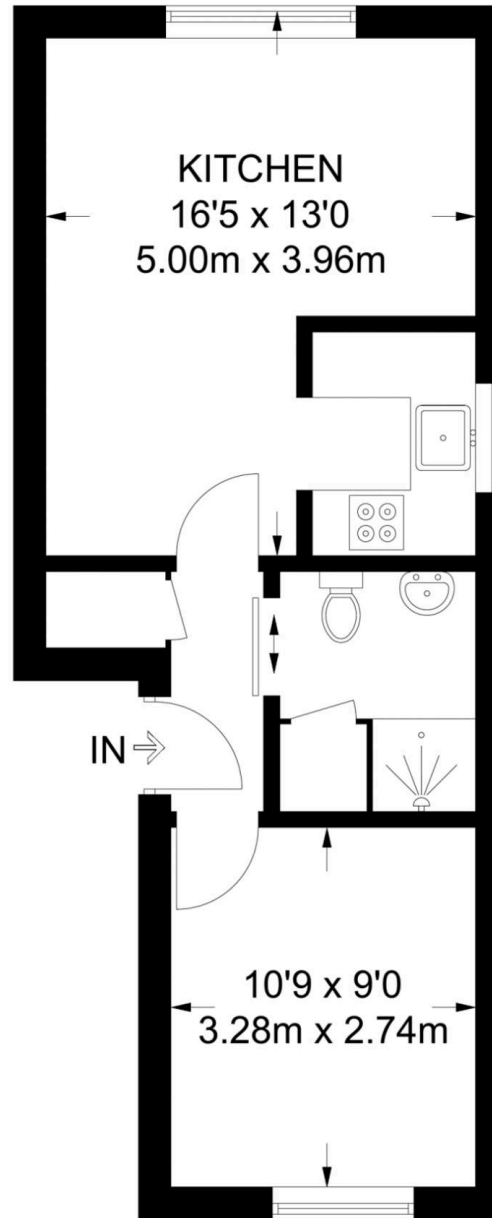
Tenure: Leasehold

EPC Energy Efficiency Rating: C

EPC Environmental Impact Rating: D

- One bedroom flat within a residential development
- Well presented throughout with a practical internal layout
- Spacious living room with space for both living and dining
- Separate kitchen with fitted wall and base units
- Spacious double bedroom with natural light
- Modern bathroom with contemporary tiling and sanitaryware
- Entrance hall with a spacious storage cupboard near the front door
- Double glazed windows throughout
- Allocated parking space for the flat
- Approximately 0.8 miles to Burnt Oak station and 1.0 miles to Edgware station





FIRST FLOOR

APPROXIMATE GROSS INTERNAL AREA
388 SQ FT / 36.1 SQ M

This plan has been drawn for illustrative and identification purposes only.