

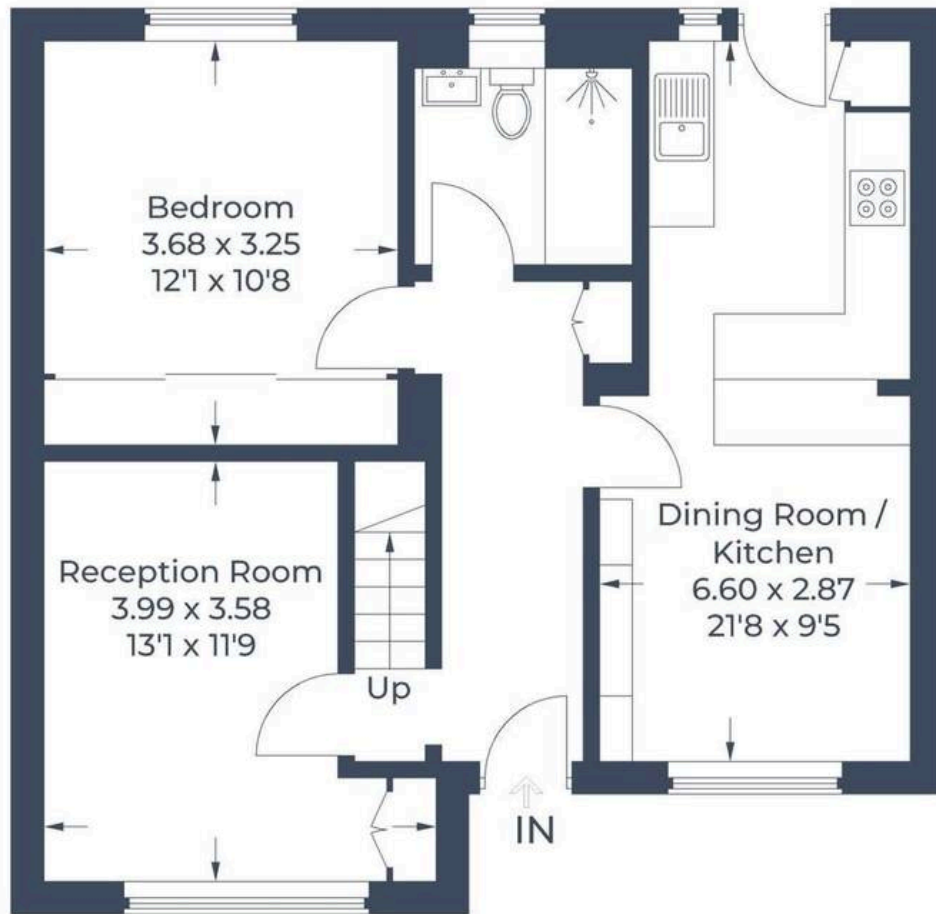


Lawrie Court, Kenton Lane, Harrow

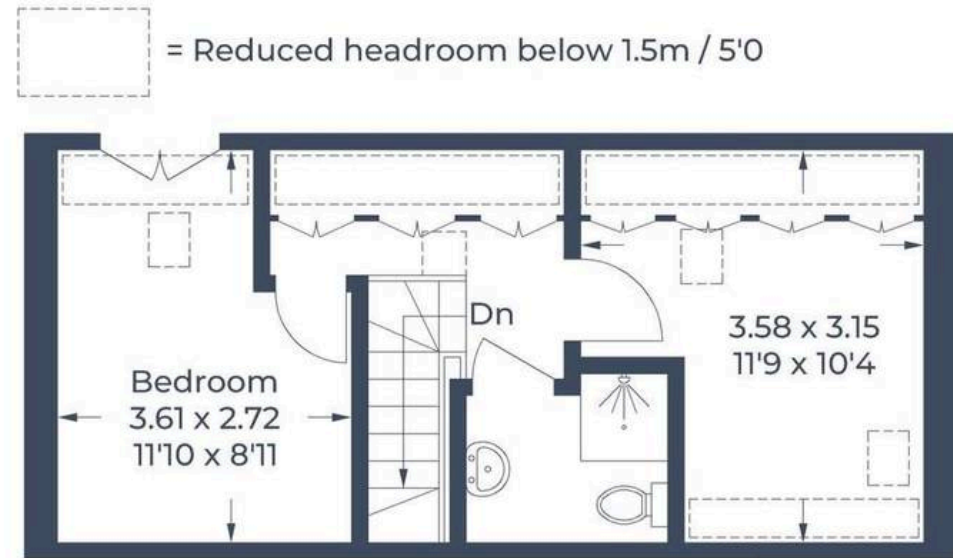
Offers Over £375,000

JOSEPH SCOTT

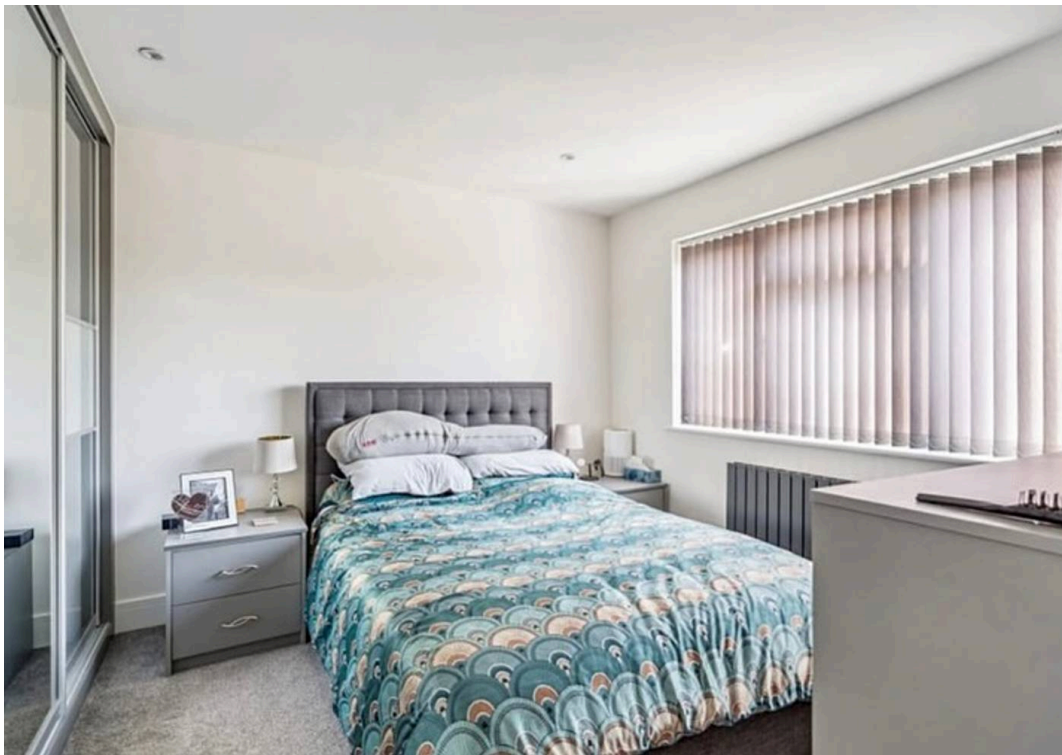
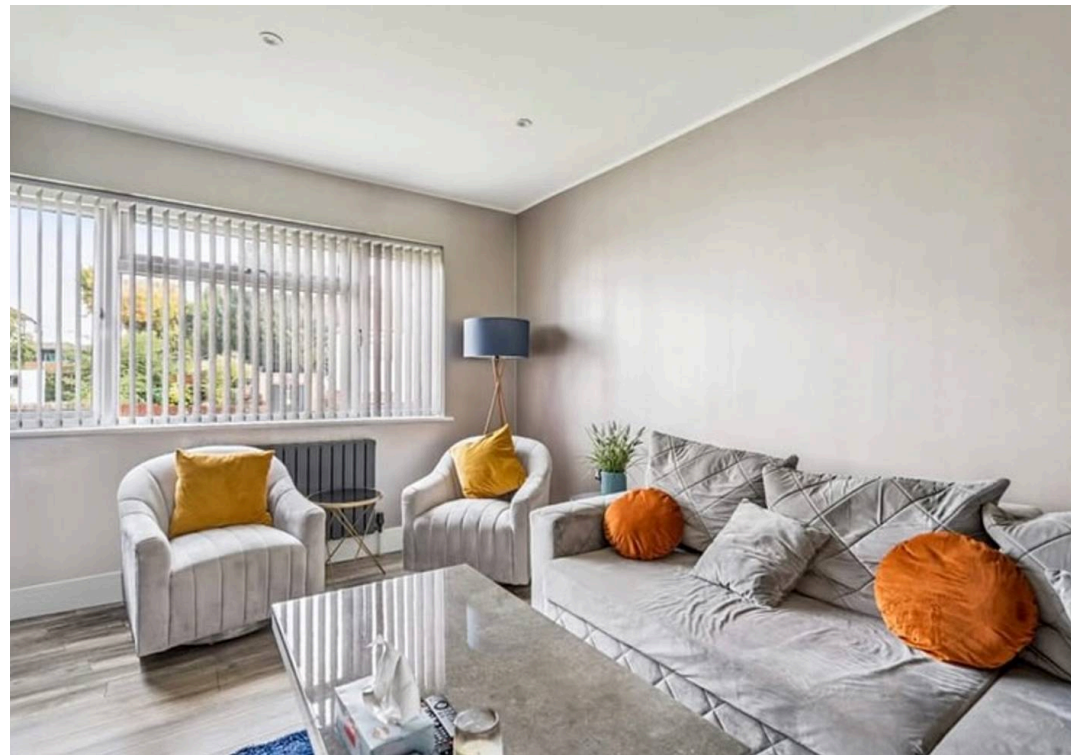
Approximate Gross Internal Area
Ground Floor = 56.7 sq m / 610 sq ft
First Floor = 28.6 sq m / 308 sq ft
Total = 85.3 sq m / 918 sq ft



Ground Floor



First Floor





Lawrie Court, Kenton Lane

Harrow

- First floor duplex flat
- Chain free
- Three bedrooms
- Bathroom and shower room
- Spacious reception room
- Separate kitchen and dining area
- Well proportioned accommodation over two floors
- Private rear garden
- Leasehold
- Good transport links and local amenities nearby

Leasehold: Circa 144 years remaining

Service Charge: Circa £1983.38 per annum

Ground rent: Circa £200.00 Per annum

Council Tax band: C

Tenure: Leasehold

EPC Energy Efficiency Rating: C