

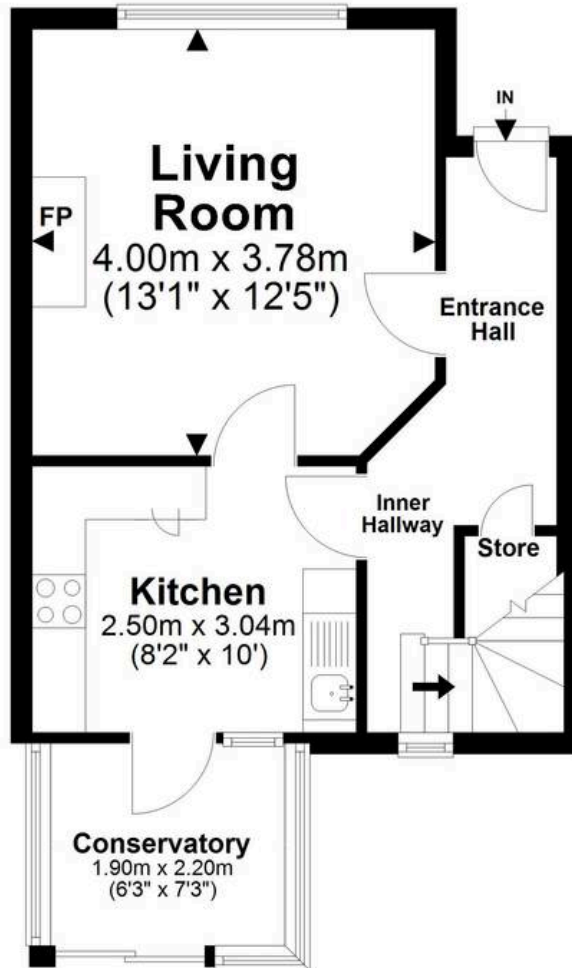


62 Gervase Road, Edgware

JOSEPH SCOTT

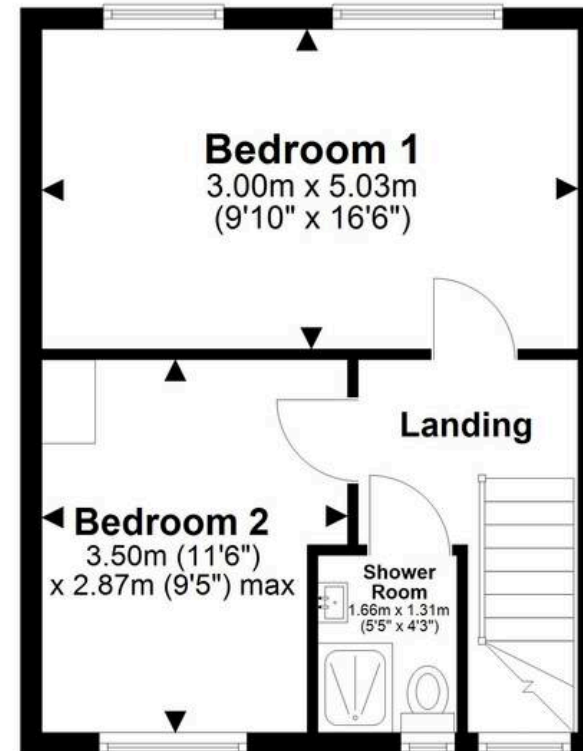
Ground Floor

Approx. 35.5 sq. metres (382.1 sq. feet)



First Floor

Approx. 33.2 sq. metres (357.2 sq. feet)

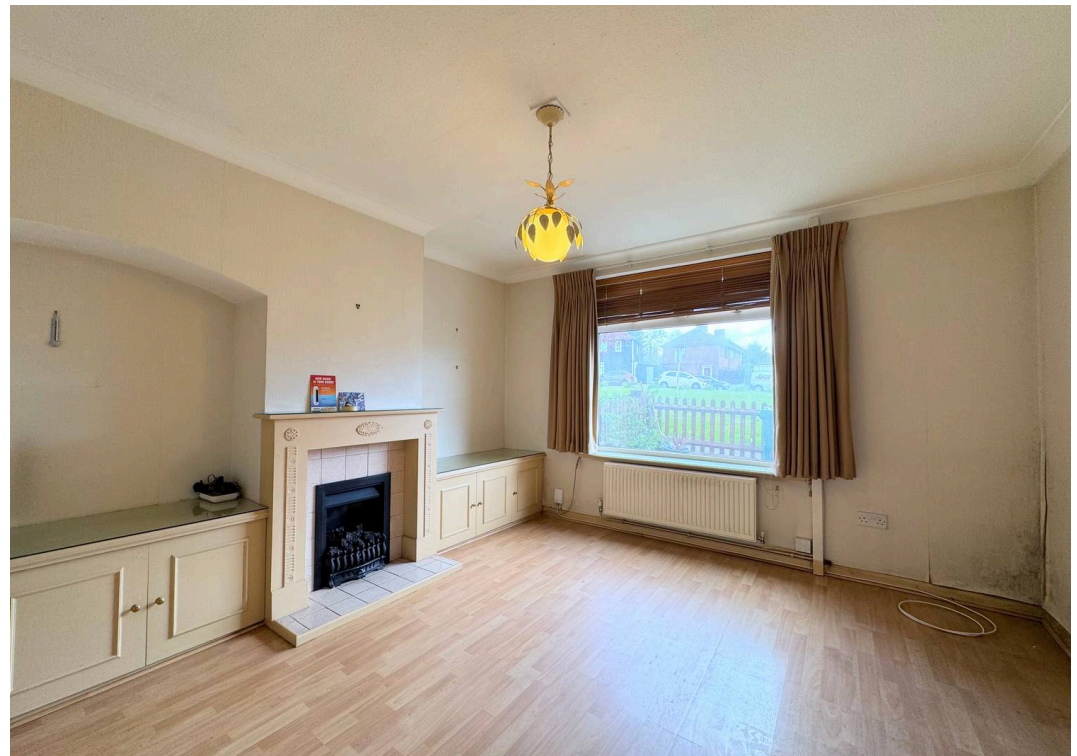


Total area: approx. 68.7 sq. metres (739.3 sq. feet)

All images used are for illustrative purposes only. Floor plan are intended to give a general indication of proposed layout only. All images and dimensions do not form of any contract or warranty.

Plan produced using PlanUp.

Gervase Road, Edgware, HA8 0EP







62 Gervase Road

Edgware, Edgware

- Two bedroom mid terrace house
- Only 0.2 miles to Burnt Oak station (Northern Line)
- Bright lounge and dining area
- Access to reception via hallway and kitchen
- Fitted kitchen with ample storage
- Conservatory with direct garden access
- Private rear garden with lawn and patio
- Two garden sheds for additional storage
- Front patio garden
- Ground floor storage cupboard under stairs

Freehold

Council Tax band: C

Tenure: Freehold

EPC Energy Efficiency Rating: D

EPC Environmental Impact Rating: