

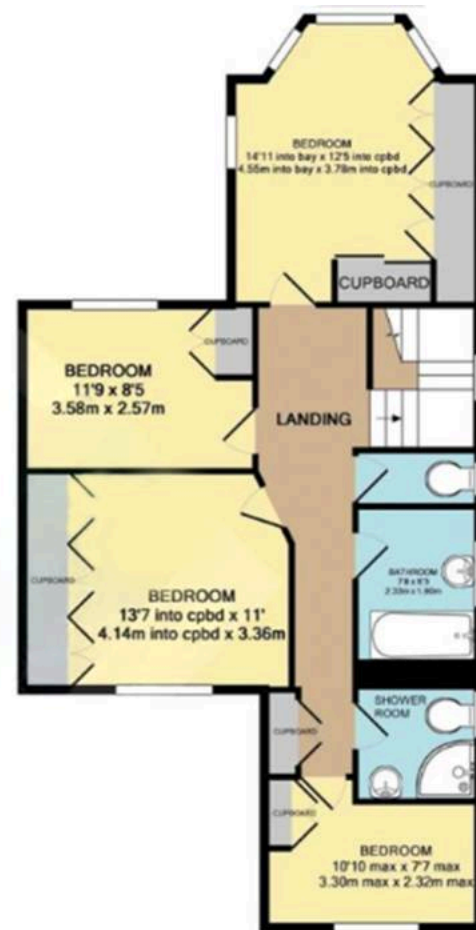


10 Marsh Lane, London
£900,000

JOSEPH SCOTT



GROUND FLOOR



1ST FLOOR



(EXCLUDES EXTERNAL STORAGE)
TOTAL APPROX. FLOOR AREA 1786 SQ.FT. (165.9 SQ.M.)

Disclaimer:

These floor plans are for guidance only and are not to scale. All measurements are approximate and should not be relied upon as a statement of fact. Any fixtures, fittings and furniture shown are for illustrative purposes only and are not included in the sale. Prospective buyers are advised to carry out their own due diligence and verify measurements independently.





10 Marsh Lane

London, London

FREEHOLD | SEMI-DETACHED

- Freehold semi-detached family home
- Four well proportioned bedrooms
- Two separate reception rooms offering flexible living space
- Spacious fitted kitchen with dining area
- Guest WC on the ground floor
- Family bathroom, separate shower room and additional WC
- Built-in storage to all bedrooms and additional hallway storage
- Substantial rear garden with mature and private aspect
- Driveway providing off street parking with side access to garden
- Located approximately 0.8 miles from Mill Hill Broadway Station (Thameslink)

Council Tax band: G

Tenure: Freehold

EPC Energy Efficiency Rating: D

EPC Environmental Impact Rating: E