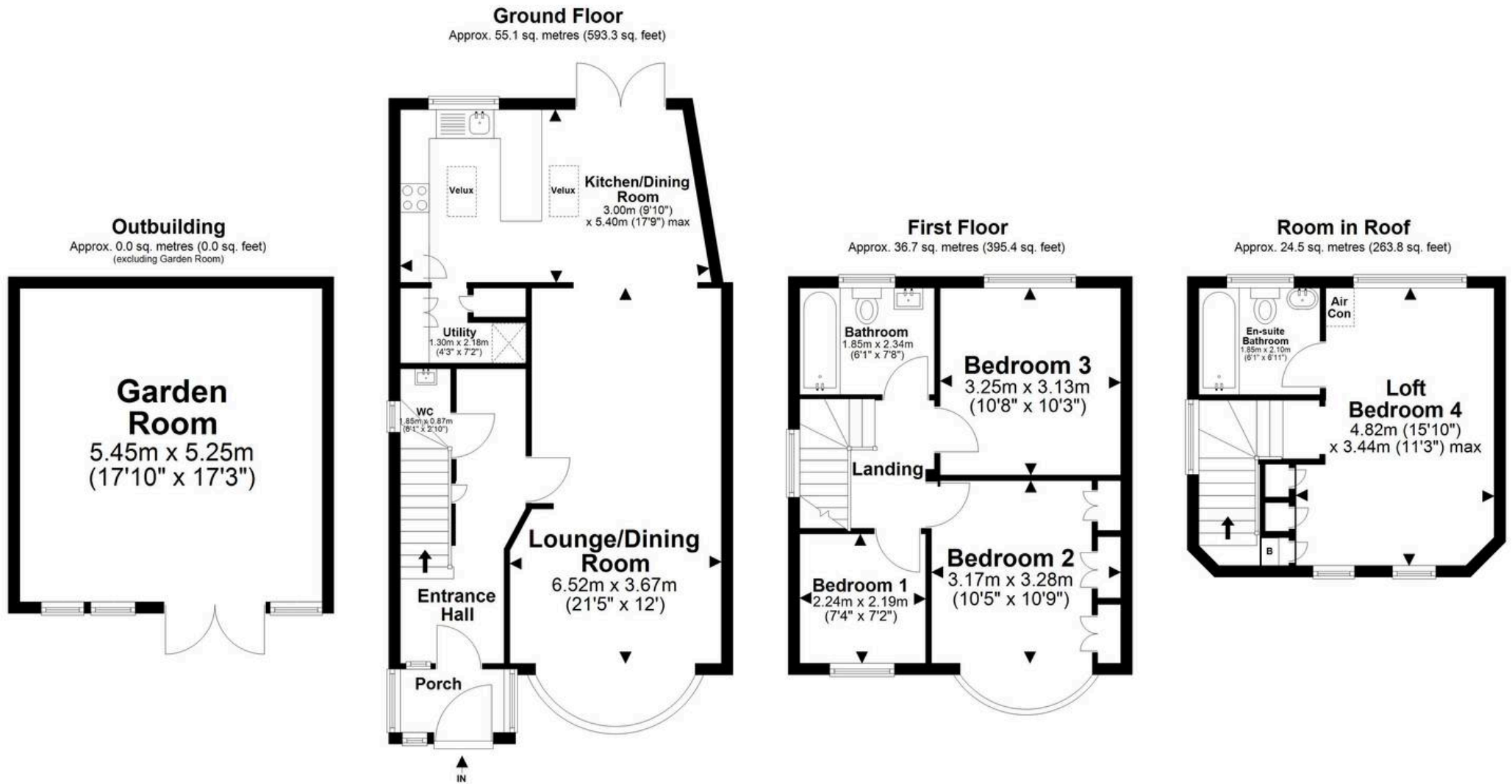




**3 Rudyard Grove, London**

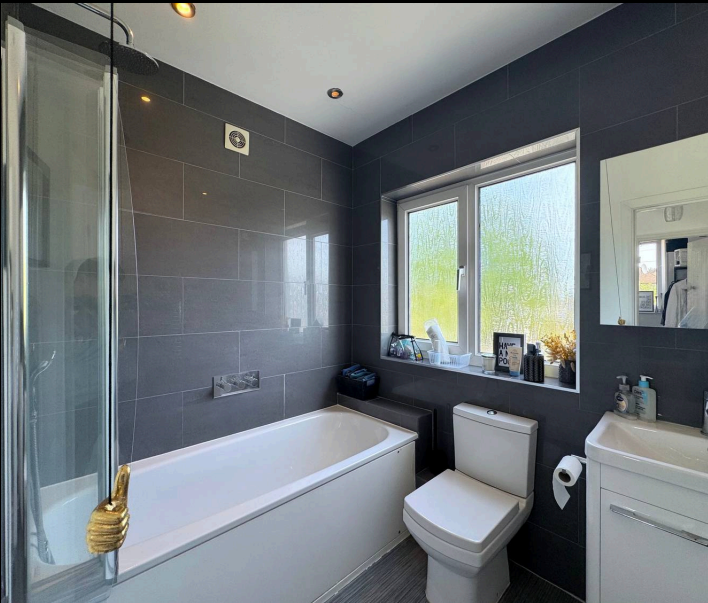
Offers Over **£825,000**



Total area: approx. 116.4 sq. metres (1252.5 sq. feet)

All images used are for illustrative purposes only. Floor plan are intended to give a general indication of proposed layout only. All images and dimensions do not form of any contract or warranty.  
Plan produced using PlanUp.

**Rudyard Grove, London, NW7 3EE**





### 3 Rudyard Grove

London, London

Council Tax band: E

Tenure: Freehold

EPC Energy Efficiency Rating: C

EPC Environmental Impact Rating:

- Four bedroom semi detached family home
- Arranged across three floors
- Principal bedroom with en suite bathroom
- Spacious living room and separate dining area
- Modern fitted kitchen with garden access
- Large rear garden with garden room
- Garden room with electrics, air conditioning and internet connection
- External electric points in the garden
- Driveway with off street parking and electric vehicle charging point
- Approximately 0.7 miles to Edgware Station (Northern Line) & approximately 0.9 miles to Mill Hill Broadway Station (Thameslink).