



20 Lodge Close, Edgware  
£495,000

**JOSEPH SCOTT**



## 20 Lodge Close

Edgware, Edgware

Service charge: Circa £5204 per annum

Leasehold: Circa 972 years remaining

Council Tax band: G

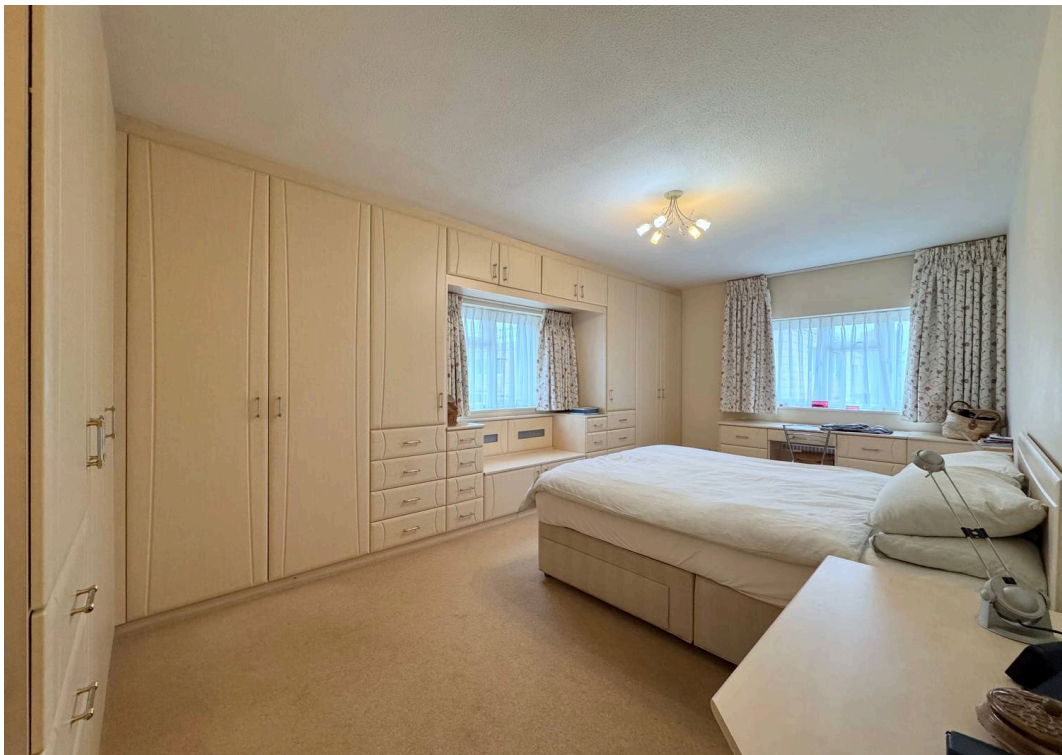
Tenure: Share of Freehold

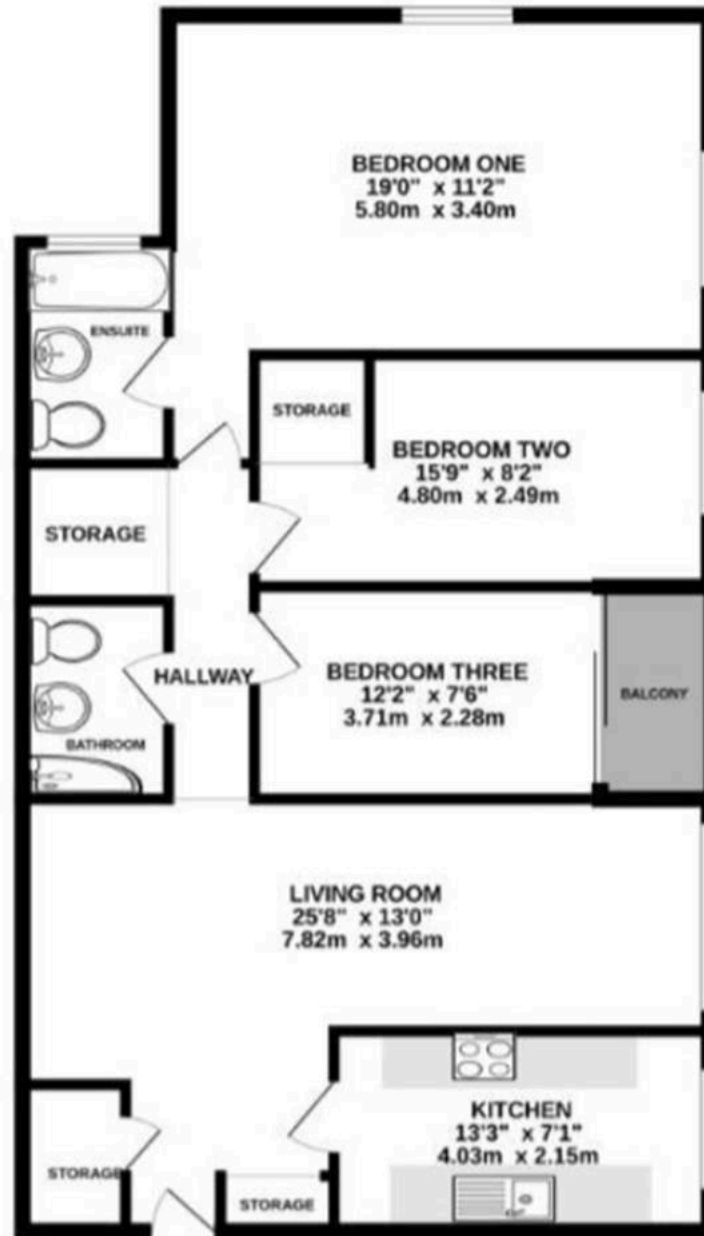
EPC Energy Efficiency Rating: D

EPC Environmental Impact Rating: D

Circa 1450 sqft

A well presented three bedroom top floor apartment Share of Freehold, offering generous living space and a well balanced layout throughout. The property benefits from excellent storage and access to communal outdoor spaces, only 0.5 miles to Edgware station (Northern Line).





**Disclaimer:**

These floor plans are for guidance only and are not to scale. All measurements are approximate and should not be relied upon as a statement of fact. Any fixtures, fittings and furniture shown are for illustrative purposes only and are not included in the sale. Prospective buyers are advised to carry out their own due diligence and verify measurements independently.