



7 Queens Mead, Edgware  
£1,000,000

**JOSEPH SCOTT**





## 7 Queens Mead

Edgware, Edgware

Joseph Scott Presents

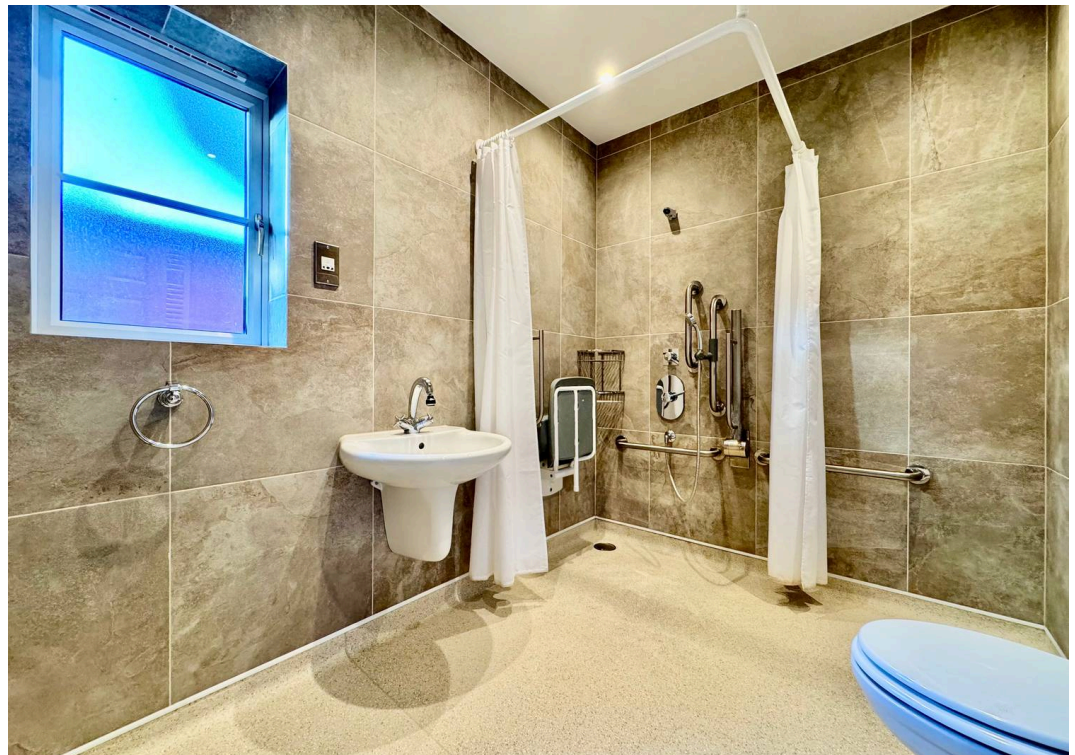
A spacious and well maintained detached bungalow positioned within a quiet and desirable gated cul de sac in Edgware. Offering generous single level living, this rarely available home features a well planned layout, bright interiors and expansive rooms throughout. The property benefits from double glazing throughout and is conveniently located for local amenities and transport links. Only 0.6 miles to Canons Park Station for Northern Line services.

The home opens into a wide entrance hallway that provides access to all principal rooms. To the rear, there is a large sitting room with dual aspect windows and doors opening directly onto the private rear garden, creating a bright and welcoming central living space. Adjacent to this is a separate dining room which also enjoys garden views and allows for an excellent flow between living, dining and outdoor areas.

The fitted kitchen and dining area is positioned to the rear of the home and benefits from direct access to the garden. The kitchen includes integrated appliances, extensive storage and generous worktop space, with a practical layout ideal for everyday use. A separate utility room provides additional storage and external access.

There are two generous double bedrooms, each positioned thoughtfully for privacy. The primary bedroom features a large walk in wardrobe and a spacious en suite wet room. The second double bedroom benefits from a fitted wardrobe and is served by a separate family bathroom.







Approximate Floor Area = 168.3 sq m / 1811 sq ft (Including Garage )



Ground Floor

