



Flat 15, Ailantus Court Stonegrove, Edgware

Offers Over £500,000

JOSEPH SCOTT



Flat 15

Ailantus Court Stonegrove, Edgware

Joseph Scott presents –

A spacious and beautifully presented **three-bedroom duplex** situated within a well-maintained purpose-built development on Stonegrove, Edgware. Ideally located close to local amenities, schools and transport links, the property is just **0.8 miles from Stanmore Underground Station (Jubilee Line)**.

Set back from the road, the property enjoys a peaceful position with pleasant greenery views from every window. The ground floor features a bright and expansive reception room with large double-glazed windows overlooking the communal gardens, providing excellent natural light. There is ample space for both living and dining areas, creating a perfect setting for family living and entertaining. The modern fitted kitchen offers sleek high-gloss cabinetry, granite-effect worktops and a generous amount of storage and workspace. The ground floor also benefits from a convenient guest WC.

Upstairs, there are three well-proportioned bedrooms, including a large principal bedroom with fitted wardrobes and pleasant garden views. The family bathroom is fully tiled and fitted with a modern white suite including a bath with shower and wash basin.

The property also benefits from residents' parking, a private allocated garage, well-kept communal gardens and excellent internal condition throughout.

Located within easy reach of local schools,



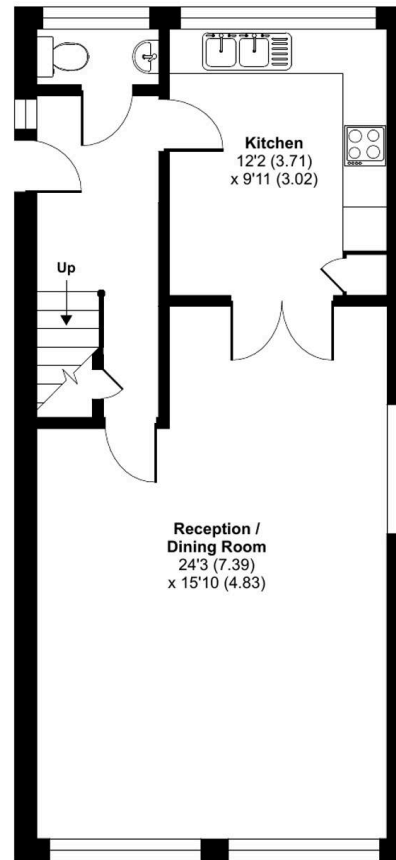
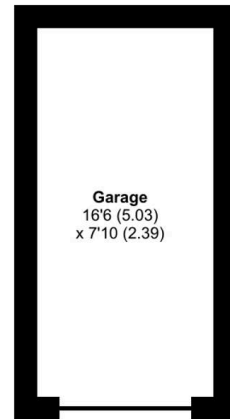
Ailantus Court, Stonegrove, Edgware, HA8

Approximate Area = 1156 sq ft / 107.4 sq m

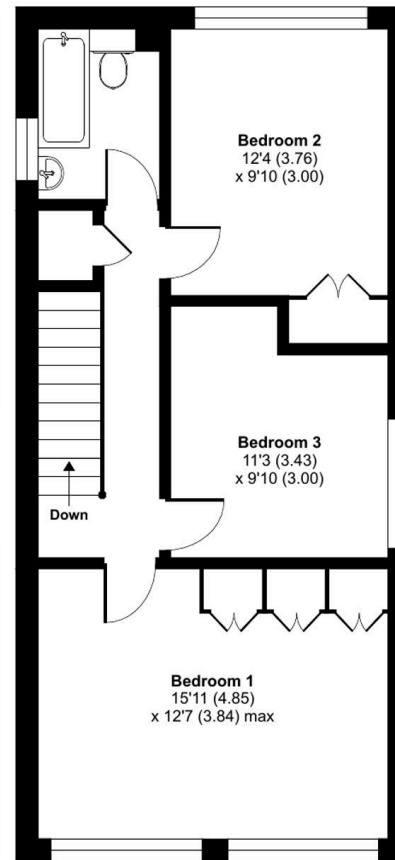
Garage = 133 sq ft / 12.4 sq m

Total = 1289 sq ft / 119.8 sq m

For identification only - Not to scale



GROUND FLOOR



FIRST FLOOR

