



Flat 39, Pisces Court, 15 Zodiac Close

Offers Over £385,000

JOSEPH SCOTT



Flat 39

Pisces Court, Edgware

Joseph Scott Presents –

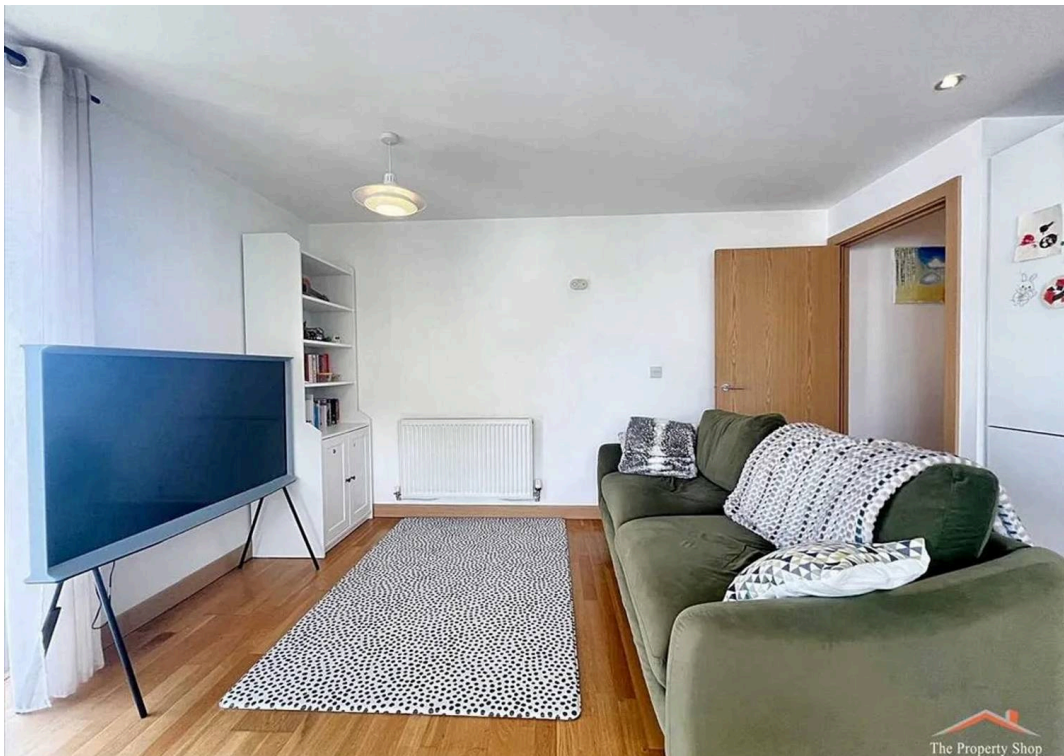
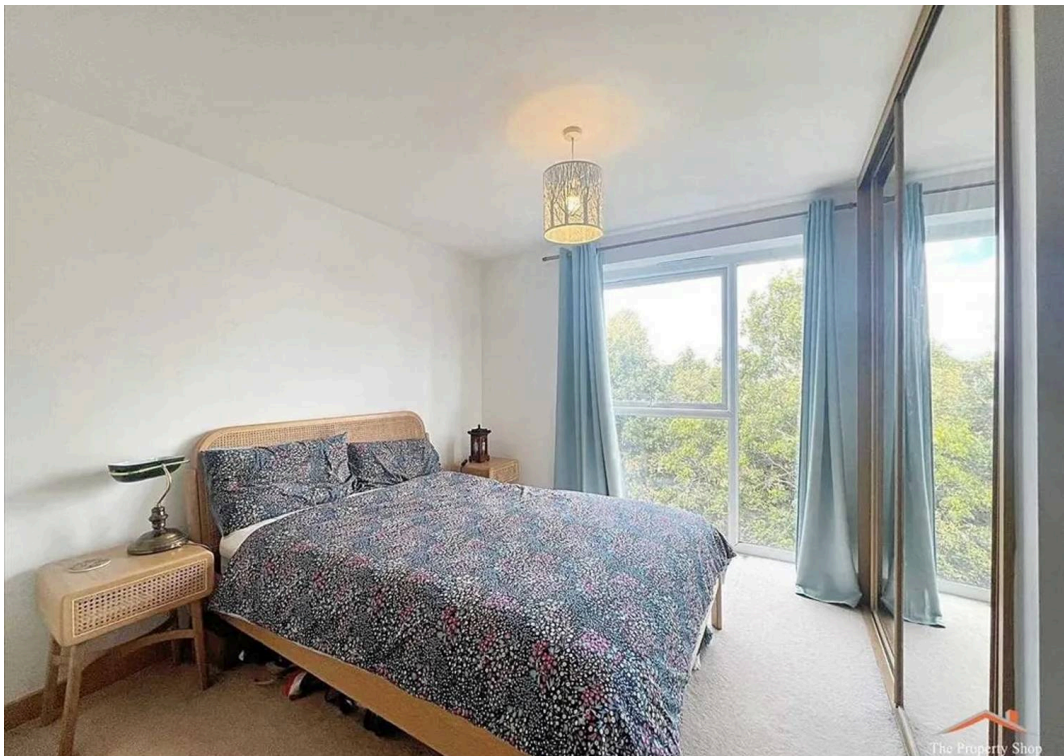
Set within the desirable Edgware Green development, this bright and spacious two-bedroom, two-bathroom apartment offers stylish modern living, a private balcony with open views, and secure allocated parking. Ideally positioned for transport links and amenities, the property is located just 0.7 miles from Edgware Underground Station (Northern Line).

The property features a welcoming entrance hallway with storage, leading to an open-plan living and dining area filled with natural light from floor-to-ceiling windows and direct access to the private balcony. The contemporary fitted kitchen includes sleek cabinetry, integrated appliances, and ample worktop space.

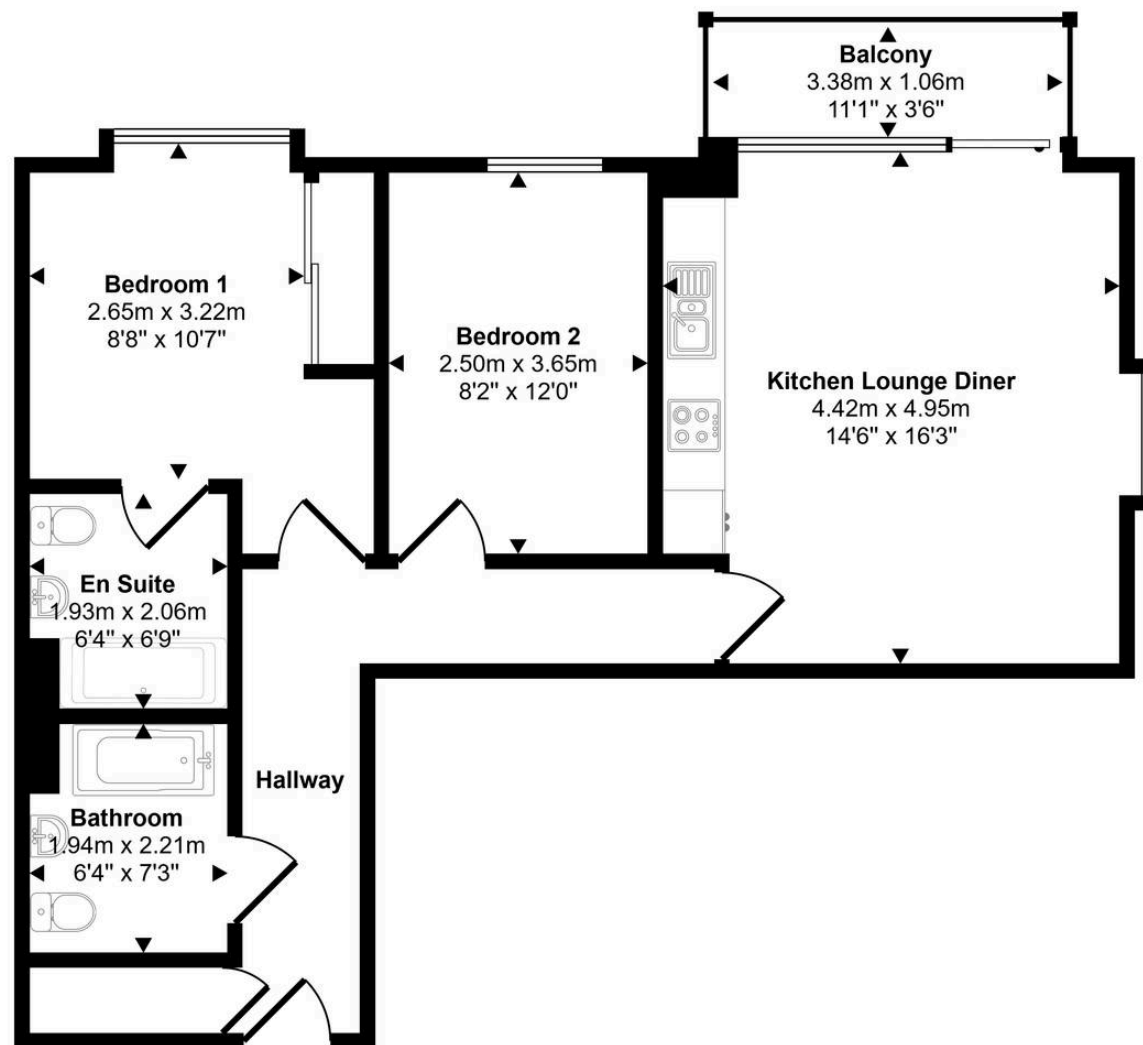
The principal bedroom benefits from fitted wardrobes and a modern en-suite shower room, while the second double bedroom is well proportioned. A separate, fully tiled family bathroom features a bath, overhead shower, and heated towel rail.

Externally, residents enjoy beautifully maintained communal gardens and secure access to the building, including lift service and an allocated parking space within a gated car park.

Located close to local shops, cafés and green spaces, the development offers convenient access to both Edgware and Burnt Oak Stations (Northern Line), as well as key road links including the M1 and A41.



Approx Gross Internal Area
63 sq m / 676 sq ft



Floorplan

This floorplan is only for illustrative purposes and is not to scale. Measurements of rooms, doors, windows, and any items are approximate and no responsibility is taken for any error, omission or mis-statement. Icons of items such as bathroom suites are representations only and may not look like the real items. Made with Made Snappy 360.