



Apt 20, 3 Explorer Way, London
£600,000

JOSEPH SCOTT



Apartment 20

3 Explorer Way, London

Joseph Scott Presents:

A Stylish Two Bedroom, Two Bathroom Apartment With Underground Allocated Parking, Located In The Scenic Millbrook Park Development.

Located on the third floor, this wonderfully presented property comprises of an open plan eat-in kitchen and lounge, completed with real wood flooring, soundproof insulations along the wall and completed with direct access on the balcony.

Further through the property, you are greeted with two double bedrooms, both complete with fitted wardrobes and one with the inclusion of an en suite.

This property also comes with an additional family bathroom, ample storage space dotted around the apartment and the perk of an underground allocated parking space.

The development on top of the above makes Explorer Way the perfect purchase for residential and investment buyers alike. A Must Look!

Council Tax band: C

Tenure: Leasehold

EPC Energy Efficiency Rating: B

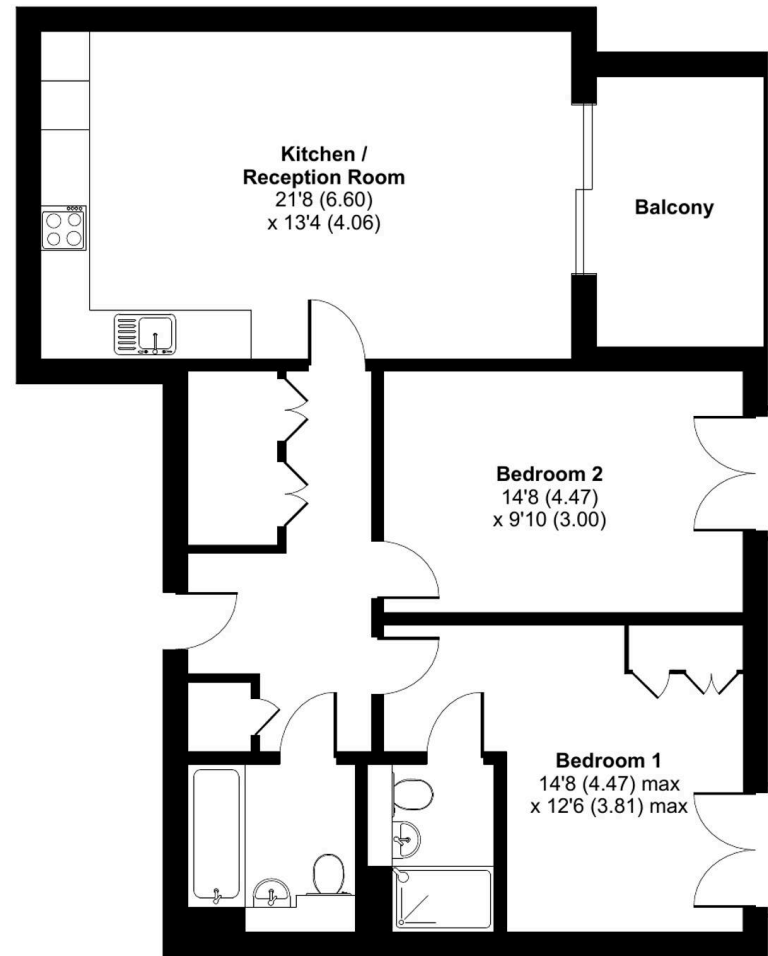
EPC Environmental Impact Rating: A



Explorer Way, London, NW7

Approximate Area = 811 sq ft / 75.3 sq m

For identification only - Not to scale



THIRD FLOOR

