



Flat 1, Sandringham Court Priory Field Drive, Edgwa  
Offers Over £300,000

**JOSEPH SCOTT**



## Flat 1

Sandringham Court Priory Field Drive,  
Edgware

JOSEPH SCOTT PRESENTS -

A Two Bedroom, Purpose Built Flat only 0.7 Miles  
to Edgware Underground station (Northern Line)  
HA8.

This property features a large lounge area, a  
separate kitchen, two double bedrooms and a  
family bathroom.

Benefits include private off-street parking, a  
quiet and residential road, all located close to  
Key transportation links such as the A41 and  
Northern Line, as well as local shops and  
amenities on the high street.

Tenure - Share of Freehold Approx 900 Years  
Remaining

Service Charge - £1,572.92 per annum

Ground Rent - £0

Council Tax Band - D

EPC Rating - C

Council Tax band: D

Tenure: Share of Freehold

EPC Energy Efficiency Rating: C

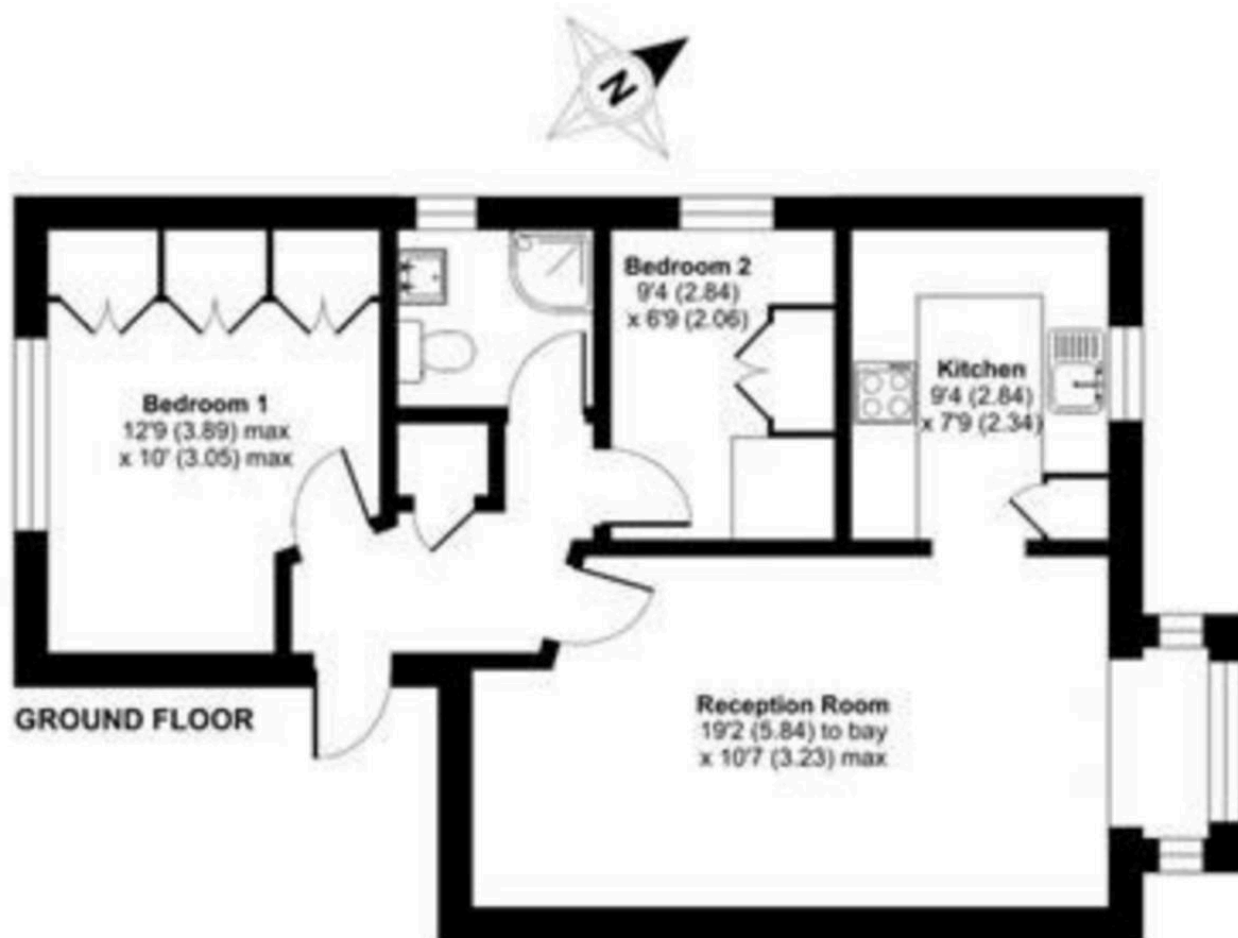
EPC Environmental Impact Rating: C



## Priory Field Drive, Edgware, London, HA8

Approximate Area = 570 sq ft / 53 sq m

*For identification only - Not to scale*



Floor plan produced in accordance with RICS Property Measurement 2nd Edition, incorporating International Property Measurement Standards (IPMS Residential). © richardson 2025. Produced for Cow & Co Properties Ltd. REF: 1271356