



Flat 27, Frost Court, 1 Salk Close

Offers Over £500,000

**JOSEPH SCOTT**





## Flat 27

### Frost Court, London

Joseph Scott Presents:

A Stylish Three Double Bedroom Apartment, Located Only 0.1 Miles, A 3 Minute Walk To Colindale Station With Two Allocated Parking Spaces!

Walking into this well presented apartment, you are greeted with an L shaped hallway, spacious open plan lounge and eat-in kitchen. The ceiling to floor windows also allows for pure natural lighting in the room, as well as the scenic views of the development.

The rooms are next, comprising of three double bedrooms, all with freestanding wardrobes and a family bathroom, as well as an additional separate toilet, located in the main bedroom.

This property also benefits with the ample storage points, dotted around the property, the residential area, quiet development and the main attraction of two underground allocated parking spaces, which is a huge perk, especially in the Colindale area!

Tenure - Leasehold (113 Years Remaining)

Service Charge - £205 Per Month (Approx £2500 Per Year)

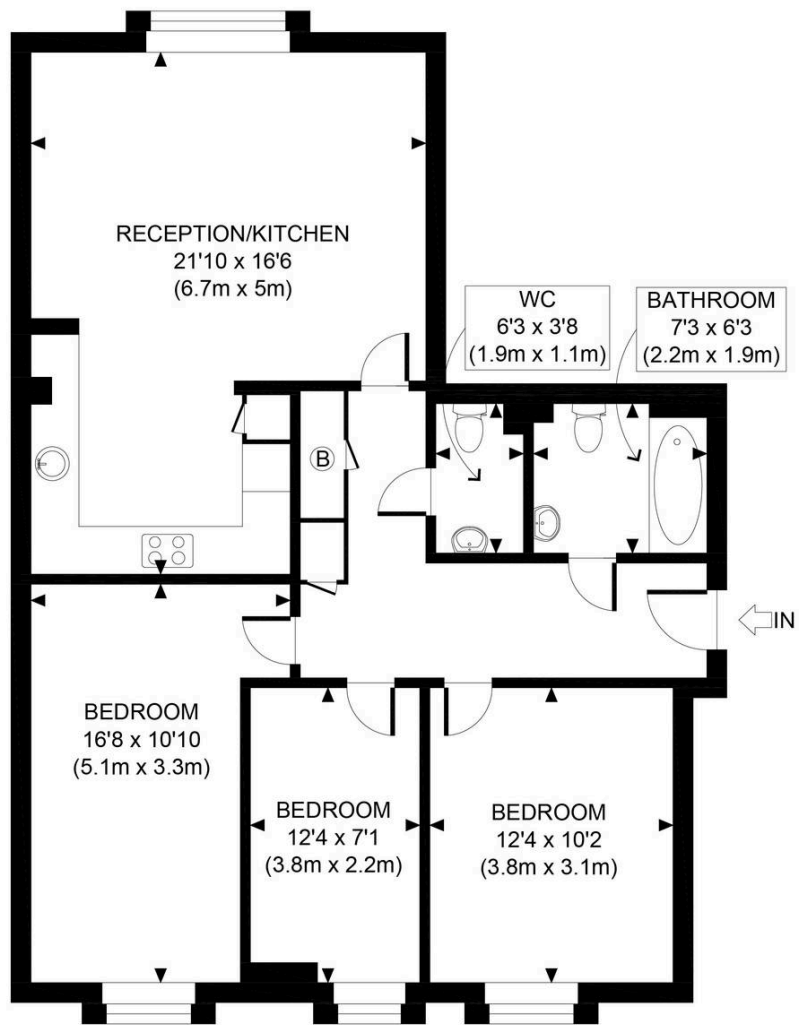
Ground Rent - £25 Per Month (£300 Per Year)

Tenure: Leasehold

EPC Energy Efficiency Rating: B








SECOND FLOOR  
GROSS INTERNAL  
FLOOR AREA 924 SQ FT



<p><b>APPROX. GROSS INTERNAL FLOOR AREA 924 SQ FT / 86 SQM</b></p> <p>Disclaimer: Floor plan measurements are approximate and are for illustrative purposes only. While we do not doubt the floor plan accuracy and completeness, you or your advisors should conduct a careful, independent investigation of the property in respect of monetary valuation</p>	<p>Frost Court</p>
	<p>date 05/03/25</p>
	<p>photoplan </p>