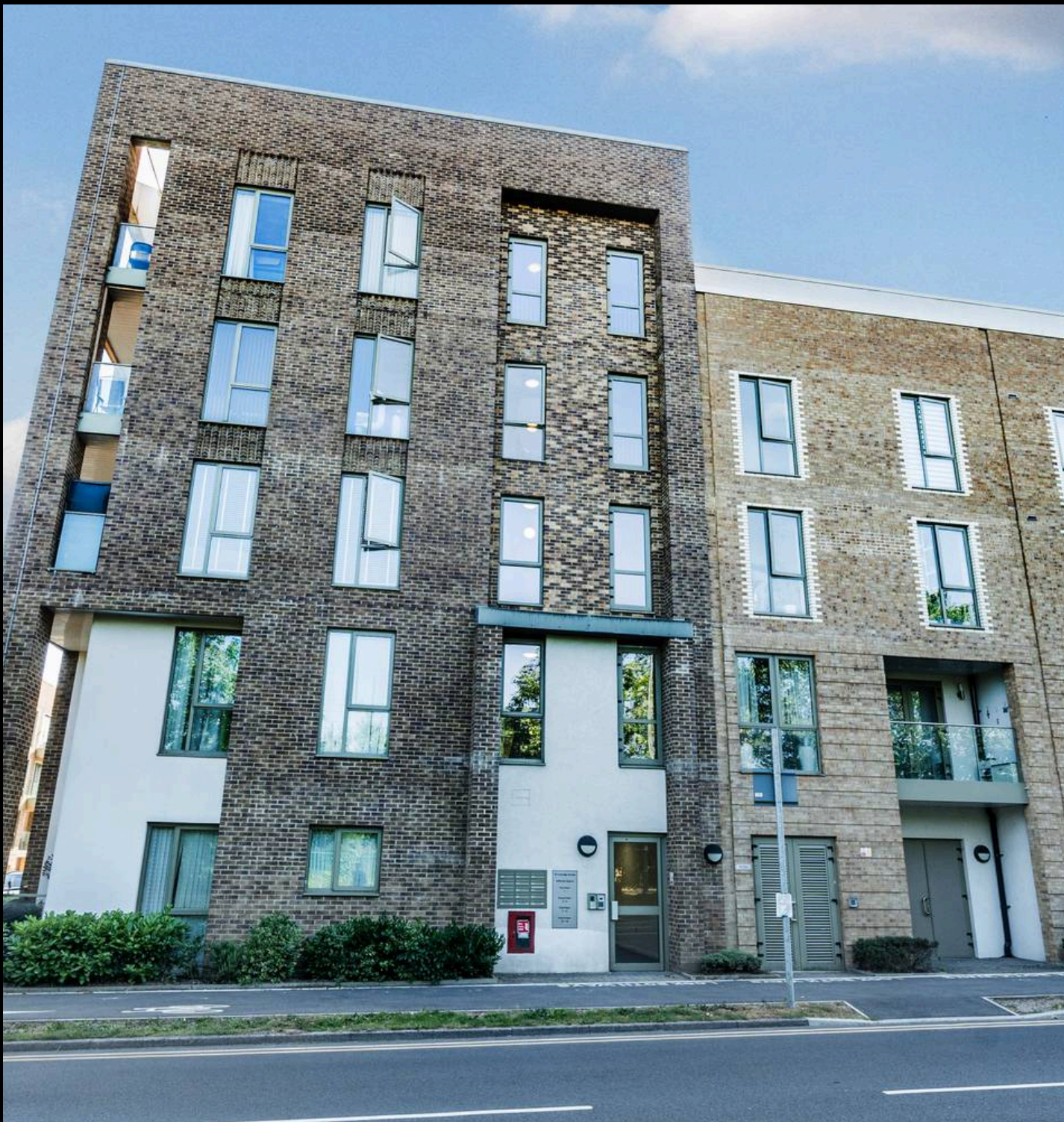




Flat 2, 10 Trobridge Parade Grahame Park Way, Lon
£425,000

JOSEPH SCOTT



Flat 2

10 Trobridge Parade Grahame Park Way,
London

Joseph Scott Presents -

A Two Bedroom, Modernised Apartment in Trobridge Parade, Constructed By The Award Winning, Barratt Homes, Equidistant To Both Mill Hill Broadway Station (Thameslink) and Colindale Station (Northern Line) Reaching Central London In 30 Minutes.

The apartment situated on the second floor of the building, showcases a large reception room, an open plan kitchen, a main double bedroom, second double bedroom and a family bathroom.

Benefits include designated closed-off parking, lift access to all floors, interior finished to a very high standard, a district heating system that is serviced annually, communal garden and under a mile from both Mill Hill Broadway Station (0.8 Miles - Thameslink) and Colindale Station (0.9 Miles - Northern Line).

Service Charge - TBC

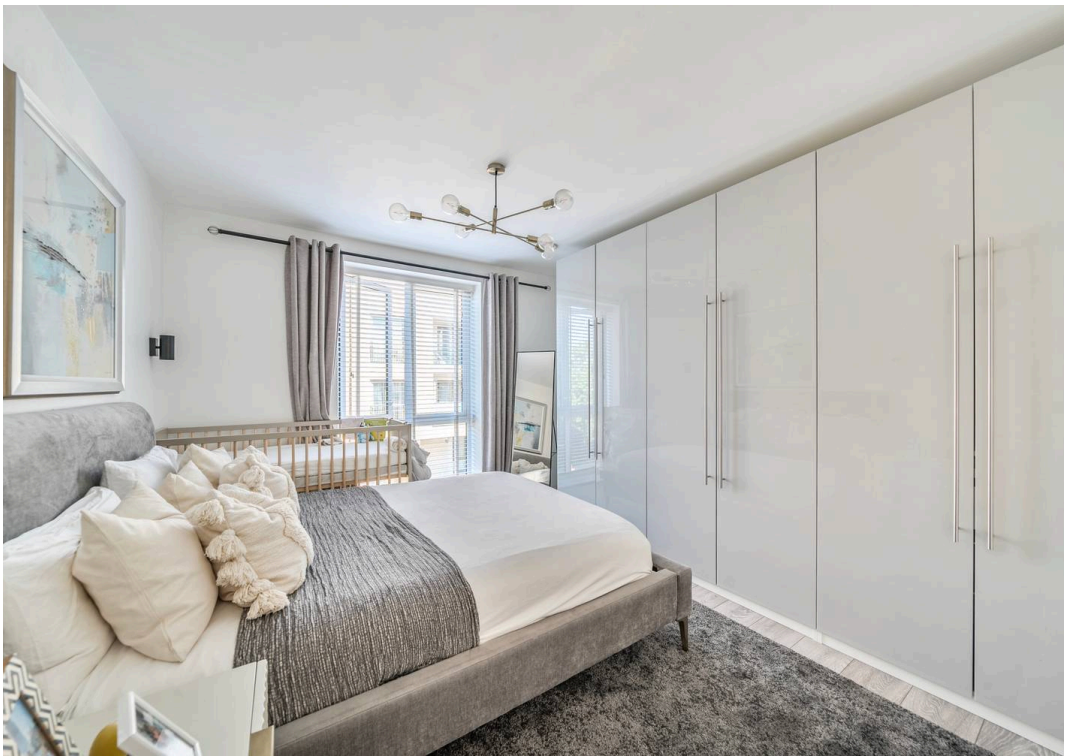
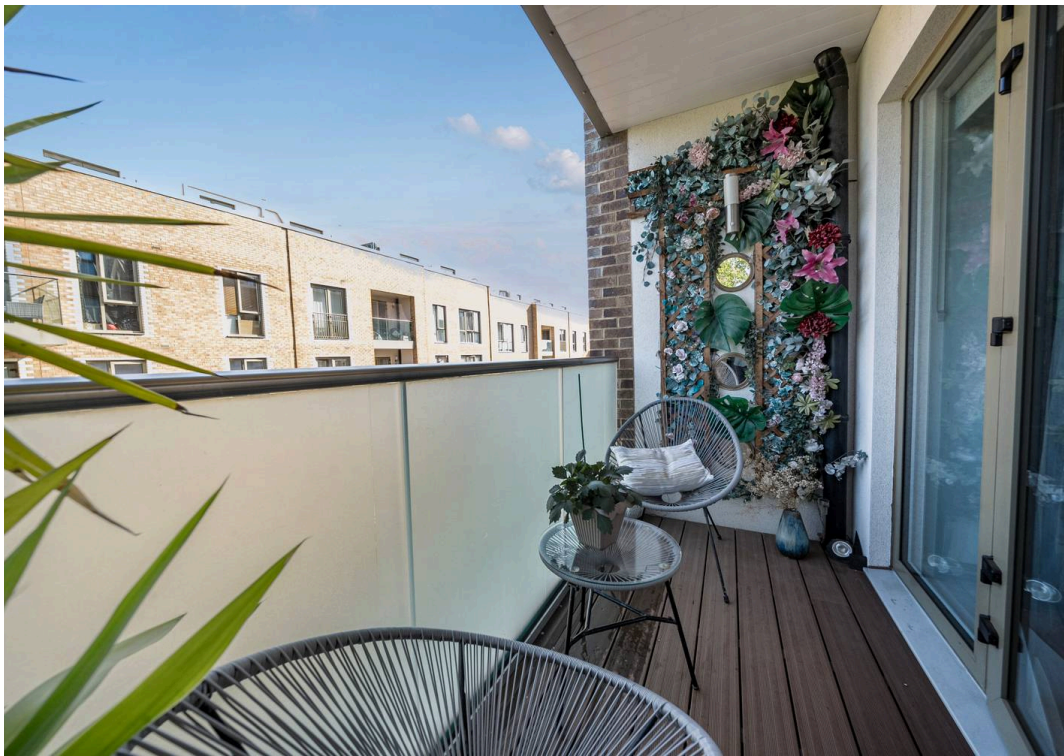
Ground Rent - TBC

Council Tax Band - D

Tenure - Leasehold. Circa 994 years Remaining

Council Tax band: D

Tenure: Leasehold



Trobridge Parade, Grahame Park Way, London, NW9

Approximate Area = 699 sq ft / 65 sq m

For identification only - Not to scale

