



17 Deal Court Hazel Close, London

Offers Over £425,000

JOSEPH SCOTT



17 Deal Court Hazel Close

London, London

Joseph Scott Presents -

A Chain Free Three Bedroom Family Home On Hazel Close, London, Only 0.4 Miles To Colindale Underground Station (Northern Line).

The property is well located only local distance from local shops, amenities and schools making this an ideal family home. This house is also located only 0.4 miles from Colindale Underground station.

The ground floor consists of a large reception room and a dining area and a separate kitchen. Through the kitchen you have direct access to the rear garden.

Benefits of this property include walking distance to local shops, schools, transport and amenities.

Tenure - Leasehold

Lease - 947 years remaining

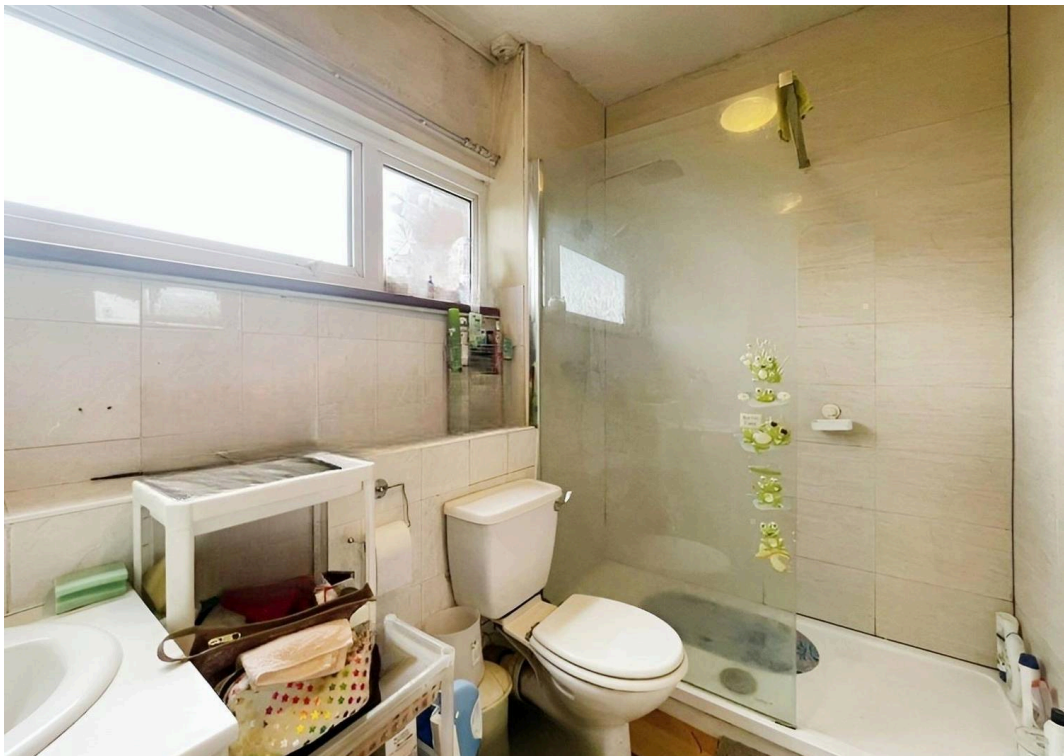
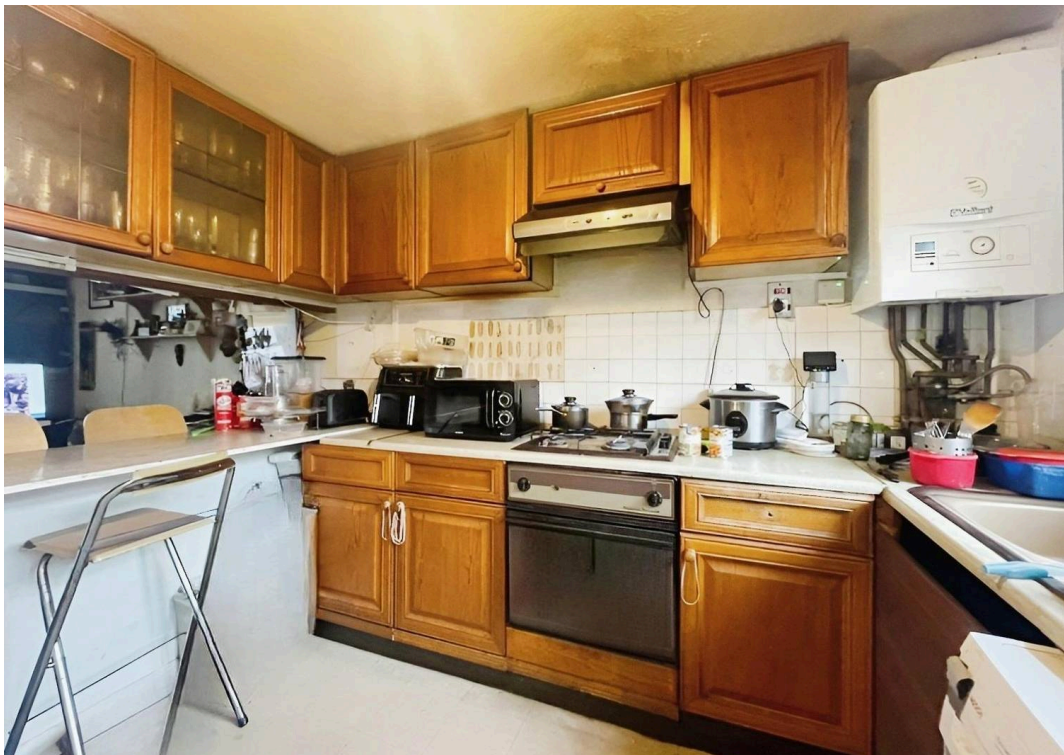
Council Tax Band - D

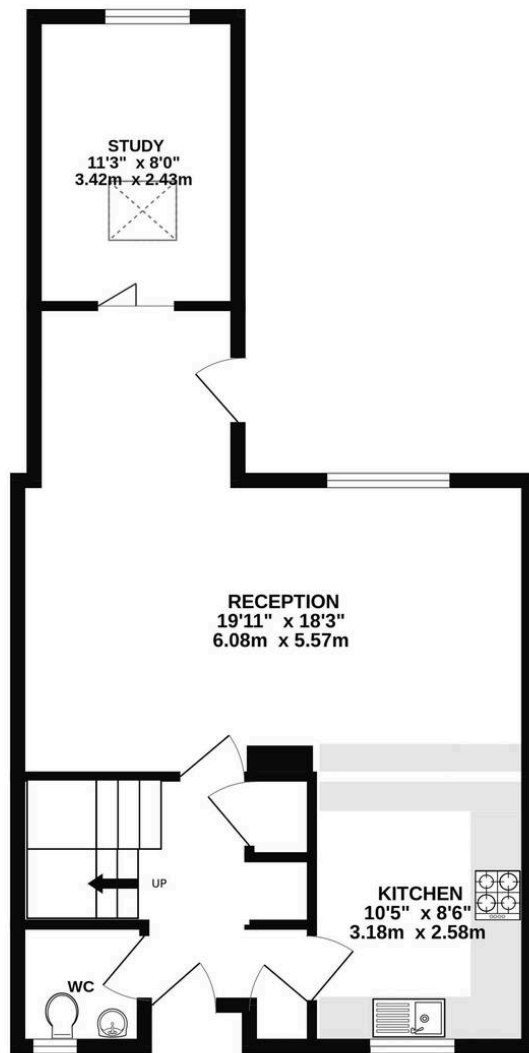
Council Tax band: TBD

Tenure: Leasehold

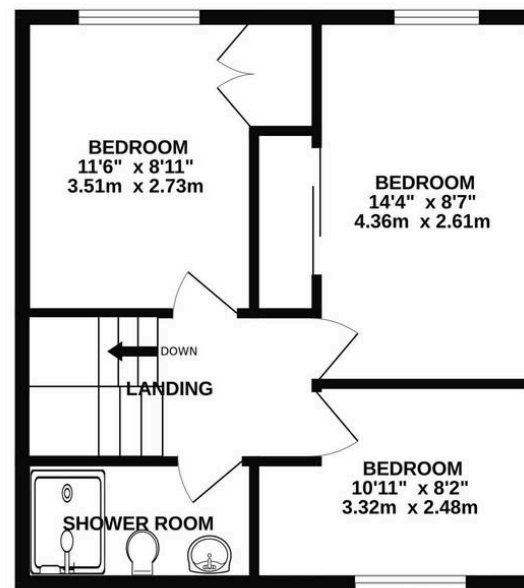
EPC Energy Efficiency Rating: D

EPC Environmental Impact Rating: E





GROUND FLOOR
572 sq.ft. (53.2 sq.m.) approx.



1ST FLOOR
429 sq.ft. (39.9 sq.m.) approx.

DEAL COURT, HAZEL CLOSE, LONDON, NW9 5FT

TOTAL FLOOR AREA : 1002 sq.ft. (93.1 sq.m.) approx.

Whilst every attempt has been made to ensure the accuracy of the floorplan contained here, measurements of doors, windows, rooms and any other items are approximate and no responsibility is taken for any error, omission or mis-statement. This plan is for illustrative purposes only and should be used as such by any prospective purchaser. The services, systems and appliances shown have not been tested and no guarantee as to their operability or efficiency can be given.
Made with Metropix ©2024