



Flat 4, Biggs Court, 1 Harvey Close
£390,000

JOSEPH SCOTT



Flat 4

Biggs Court, London

Joseph Scott presents this wonderfully located spacious Chain-free 2-bedroom flat in the heart of Colindale less a few hundred yards from the underground station. This flat is wonderfully situated surrounded by parks (Montrose), transport links, schools and amenities. Everything you could need in walking distance.

The apartment comprises two spacious double bedrooms, a spacious family bathroom and a bright and sizeable reception room. The property also features large utility room, ample storage and a modern finished separate Kitchen. Additional benefits include an allocated parking space outdoors and a residents only communal garden.

This would make for an incredible home for anyone looking to get onto / move up the property ladder or an experienced investor keen for a buy-to-let.

The Vendor has informed us of the following costs associated with the lease:

Service charges- £143/month

Ground rent- £19/month

Leasehold - circa 112 years remaining

Council Tax band: TBD

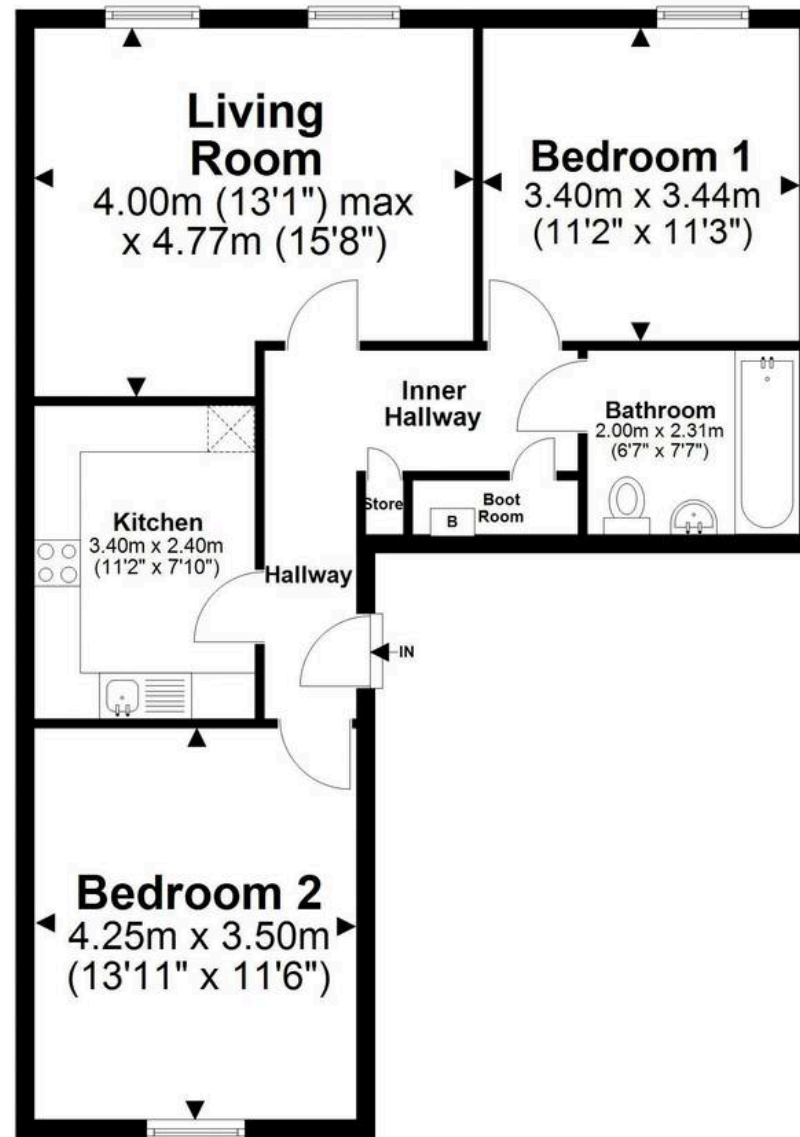
EPC Energy Efficiency Rating: B

EPC Environmental Impact Rating: A



First Floor Flat

Approx. 67.9 sq. metres (731.1 sq. feet)



Total area: approx. 67.9 sq. metres (731.1 sq. feet)

All images used are for illustrative purposes only. Floor plan are intended to give a general indication of proposed layout only. All images and dimensions do not form of any contract or warranty. For the exclusive use of Joseph Scott Estate Agents. Plan produced using PlanUp.
Plan produced using PlanUp.

Biggs Court, 1 Harvey Close, London NW9 5WF