



28 Hale Court, Hale Lane

Offers Over £400,000

JOSEPH SCOTT



28 Hale Court

Hale Lane, Edgware

Joseph Scott would like to proudly present a modern 2-Bedroom, 1-bathroom property located close to Mill Hill and Edgware stations.

This second floor apartment boasts a modern finish and ample natural light with double glazed windows on 3 sides of the property. The home is fantastically located on hale lane in walking distance of both Mill Hill and Edgware, with great access to the M1 and M25.

The main features of the property are a spacious open plan kitchen reception area, that includes integrated appliances and quartz worktops. 2 Large double bedrooms with plenty of area for storage and a modern family bathroom with underfloor heating and fitted storage throughout.

For your best chance to secure a viewing, please contact Joseph Scott on 02089062244.

Remaining Lease: Circa 118 Years.

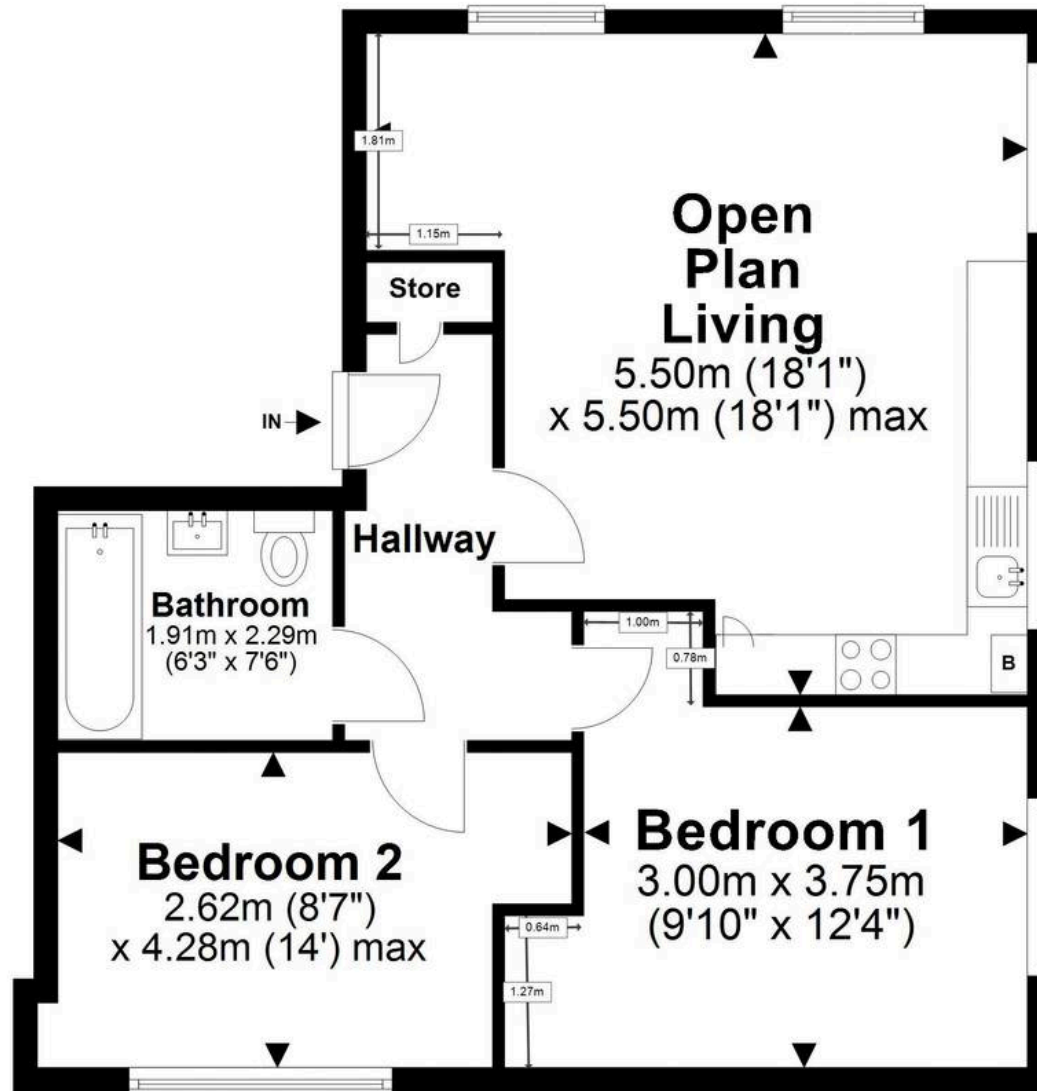
Service Charge & Ground Rent - Circa £804 per annum.

Council Tax Band: D
EPC Environmental Impact Rating: B



Second Floor Flat

Approx. 59.3 sq. metres (638.1 sq. feet)



Total area: approx. 59.3 sq. metres (638.1 sq. feet)

All images used are for illustrative purposes only. Floor plan are intended to give a general indication of proposed layout only. All images and dimensions do not form of any contract or warranty. For the exclusive use of Joseph Scott Estate Agents. Plan produced using PlanUp.
Plan produced using PlanUp.

Hale Court, Hale Lane, Edgware, HA8 9RG