



**3 Laurel Gardens, London**

Offers Over **£875,000**

**JOSEPH SCOTT**





### 3 Laurel Gardens

London, London

Joseph Scott Presents:

A Wonderfully Presented Five Bedroom House,  
Located In The Quiet And Residential Cul-De Sac  
Road, Laurel Gardens!

Walking into this stylish house, you are greeted  
with a spacious reception room, broadcasting  
views of the tranquil, residential area

Further on, you will find a separate lounge area  
and separate utility room, as well as a  
modernised open plan eat-in kitchen, complete  
with direct access into the private patio area  
and rear garden

Facing into the rear garden, you will see an  
outbuilding, where, inside you will not only be  
able to envision the spacious interior but find a  
stunning water fountain too

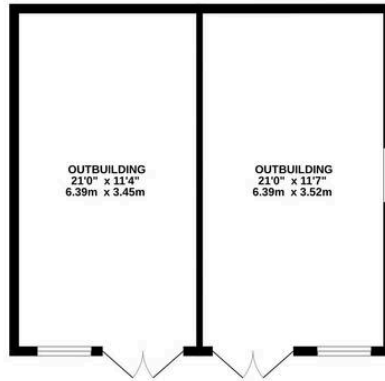
As you continue your tour through this property,  
you will be presented with three double  
bedrooms, two with the inclusion of an en suite  
and single bedroom, as well as separate family  
bathroom

This property has been extended, not only into  
the kitchen and rear of the property but into the  
loft as well, allowing for a loft room being  
created

Further perks are the many storage spaces,  
dotted around the property, the convenience of  
having a downstairs toilet, an additional shower  
loft suite





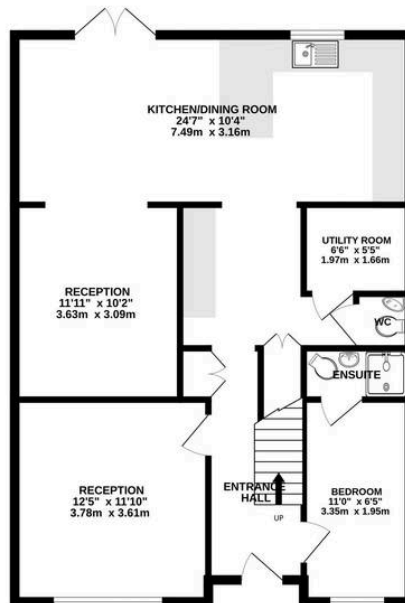


OUT BUILDING  
478 sq.ft. (44.4 sq.m.) approx.

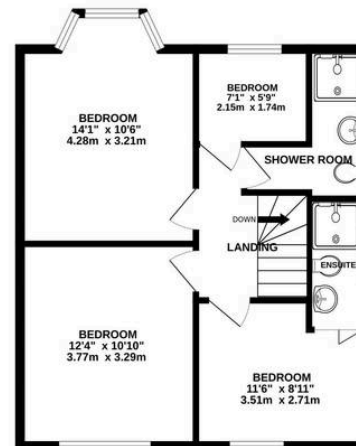
# LAUREL GARDENS, MILL HILL, NW7 3HA

TOTAL FLOOR AREA : 2086 sq.ft. (193.8 sq.m.) approx.

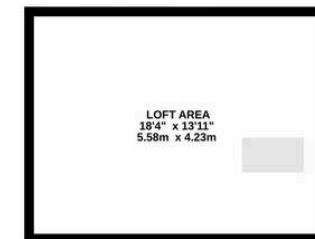
Whilst every attempt has been made to ensure the accuracy of the floorplan contained here, measurements of doors, windows, rooms and any other items are approximate and no responsibility is taken for any error, omission or mis-statement. This plan is for illustrative purposes only and should be used as such by any prospective purchaser. The services, systems and appliances shown have not been tested and no guarantee as to their operability or efficiency can be given.  
Made with Metropix ©2025



GROUND FLOOR  
828 sq.ft. (76.9 sq.m.) approx.



1ST FLOOR  
527 sq.ft. (48.9 sq.m.) approx.



LOFT  
253 sq.ft. (23.5 sq.m.) approx.