



23 Fulbeck Drive, London

Offers Over £850,000

**JOSEPH SCOTT**





## 23 Fulbeck Drive

NW9, London

Joseph Scott Presents – A well-maintained four-bedroom, semi-detached property featuring a garage that is the quintessential family home you've been searching for, offering a blend of comfortable living spaces, ample outdoor areas, and proximity to essential amenities. Relish the space and freedom of this generously sized property, nestled on a large private drive. Inside, discover the spacious living quarters, tastefully designed to offer the best of comfort and functionality. The property comprises four well-proportioned bedrooms, two full sized bathrooms and features a warm, inviting interior that is sure to make you feel at home.

Not only is this home warm and welcoming, but its location is also very convenient. Positioned within a stone's throw from local transport links, you're just a 12-minute walk from Colindale Underground Station, providing easy access to Central London and beyond. Moreover, the property's excellent location ensures you're never far from everyday conveniences. Find your favorite high-street shops, cozy cafés, and enticing restaurants just around the corner. Education options abound with several highly-rated schools nearby, and the lush greenery of Colindale Park offers a space for outdoor activities within walking distance.

Council Tax band: D

EPC Energy Efficiency Rating: C

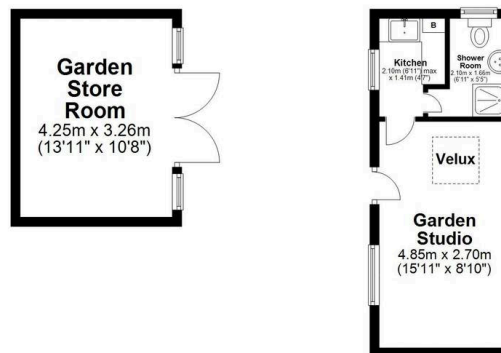
EPC Environmental Impact Rating: D





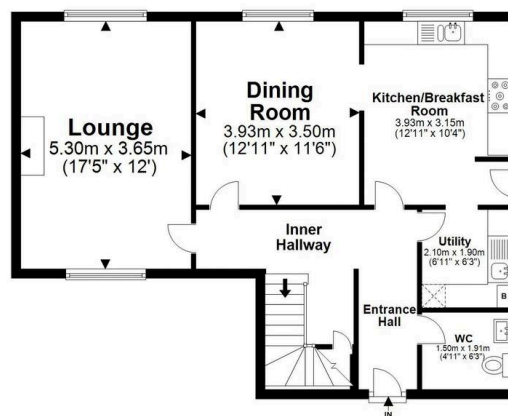
# Outbuilding

Approx. 0.0 sq. metres (0.0 sq. feet)



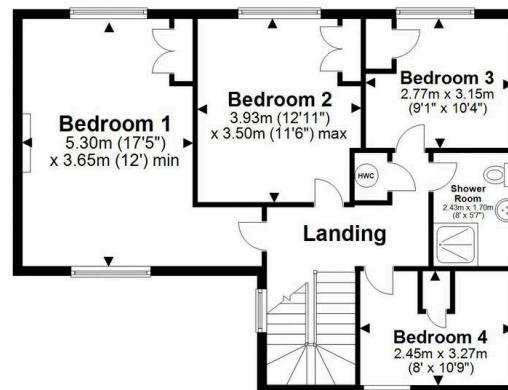
# Ground Floor

Approx. 68.9 sq. metres (742.1 sq. feet)



# First Floor

Approx. 69.1 sq. metres (743.4 sq. feet)



Total area: approx. 138.0 sq. metres (1485.5 sq. feet)

All images used are for illustrative purposes only. Floor plans are intended to give a general indication of the proposed layout only. All images and dimensions are not intended to form part any contract or warranty.  
Plan produced using PlanUp.

Fulbeck Drive, London, NW9 5LH