



1A Hale Court, Hale Lane

In Excess of £375,000

JOSEPH SCOTT



1A Hale Court

Hale Lane, Edgware

Joseph Scott would like to proudly present a lovely 2-Bedroom, 1-bathroom property located in the heart of Edgware. **The apartment features two bedrooms, a bright and spacious open plan kitchen reception area, that includes integrated appliances and quartz worktops.**

This property offers a modern bathroom with underfloor heating, a smart video entry system and a good level of storage facility throughout the property. This property located in the popular Edgware suburb in North West London situated 20 minutes from the City centre.

Principally a shopping and residential area, it has excellent transport links via Edgware's Northern Line underground station and is ideal for drivers with its easy access to the M1 and M25. Edgware is attractive to homebuyers due to its appealing streets, semi-detached and detached houses and proximity to places of worship and prestigious state and private schools including North London Collegiate School and Rosh Pinah Primary School.

Remaining Lease = 119 years

Ground rent: £350 Per Year.

Service charge: £350 Per Year.

Council Tax band: TBD

EPC Energy Efficiency Rating: B

EPC Environmental Impact Rating: B

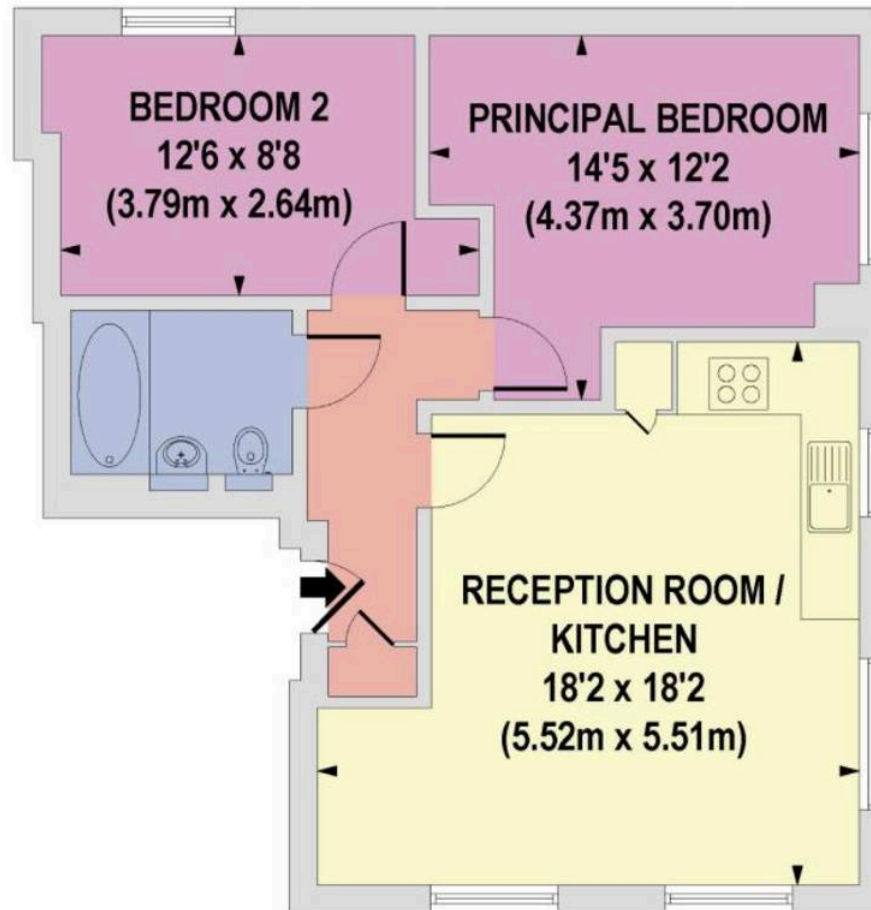


HALE COURT

Hale Lane



Approximate Gross Internal Floor Area
638 sq. ft / 59.28 sq. m



LOWER GROUND FLOOR

Floorplan is for illustrative purposes only and is not to scale. Every attempt has been made to ensure the accuracy of the floor plan shown, however all measurements, fixtures, fittings and data shown are an approximate interpretation for illustrative purposes only. Liability for errors, omissions or mis-statement through negligence or otherwise is hereby excluded.