



3 Bushfield Crescent, Edgware
£539,000

JOSEPH SCOTT



3 Bushfield Crescent

Edgware, Edgware

Joseph Scott Present -

A Three-Bedroom, End of Terrace House With Spacious Front and Rear Garden, Only 0.3 Miles From Broadfields Primary School.

As you enter the property you are greeted with a bright and welcoming hallway, leading you into a spacious through lounge and dining area, an additional utility room and separate modernised kitchen.

The first floor offers three large double bedrooms, practical storage and a large family bathroom boasting both a shower and bath.

Benefits include, quite residential area, 0.3 Miles from Broadfields primary school, ample storage space an outhouse and the option for a rear extension (STPP).

Council Tax band - D

Tenure - Freehold

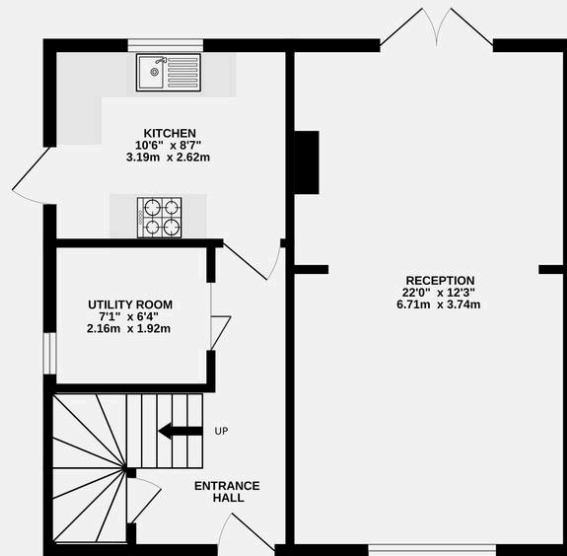
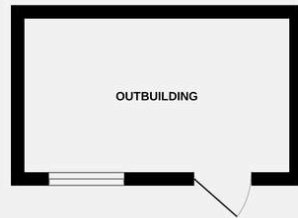
Council Tax band: TBD

EPC Energy Efficiency Rating: C

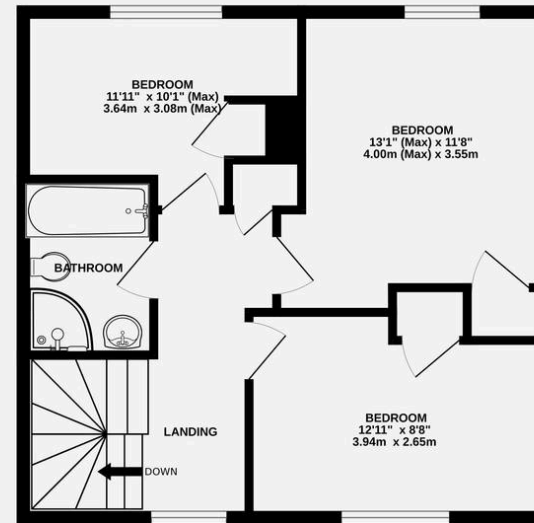
EPC Environmental Impact Rating: C



OUTBUILDING



GROUND FLOOR
509 sq.ft. (47.3 sq.m.) approx.



1ST FLOOR
509 sq.ft. (47.3 sq.m.) approx.

BUSHFIELD CRESCENT, EDGWARE, HA8 8XG

TOTAL FLOOR AREA : 1018sq.ft. (94.6 sq.m.) approx.

Whilst every attempt has been made to ensure the accuracy of the floorplan contained here, measurements of doors, windows, rooms and any other items are approximate and no responsibility is taken for any error, omission or mis-statement. This plan is for illustrative purposes only and should be used as such by any prospective purchaser. The services, systems and appliances shown have not been tested and no guarantee as to their operability or efficiency can be given.

Made with Metropix ©2024